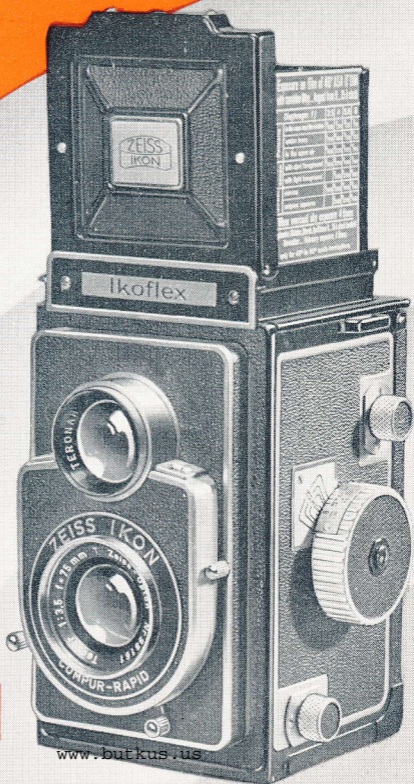


# New IKOFLEX IIIA





## IKOFLEX II-A

is a twin lens reflex camera of superior design and craftsmanship.

The reflex camera system with two matched and coordinated lenses, one for taking and another one for viewing, has great advantages. Before, and even during, the exposure you see on the ground glass a true image of the photograph which you intend to take. No more guessing of distance in order to have sharp focus, because you can clearly see whether the picture is sharp. No doubt as to whether you have the proper angle and the desired framing of the scene, because you see it all on the focusing screen.

With the Ikoflex camera you preview and control your picture.

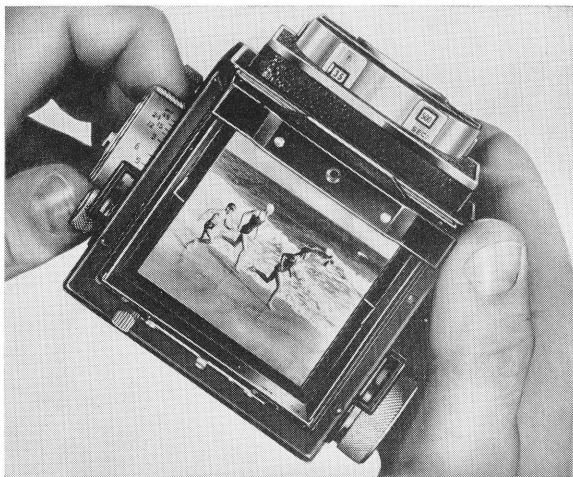
Ikoflex II-A takes 12 pictures  $2\frac{1}{4} \times 2\frac{1}{4}$ " on 120 or B2 roll film, a good size for the album and enlarging.

### BRILLIANT FOCUSING IMAGE

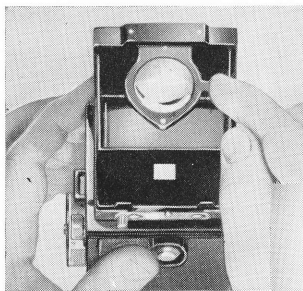
Snap up the focusing hood and look at the focusing screen. A surprise awaits you! You see the brightest image ever achieved on a reflex screen—evenly illuminated to the very corners! This marvelous brilliance is due to the EXTRABRITE screen. Image is true in color, right side up and in full  $2\frac{1}{4} \times 2\frac{1}{4}$ " size—the same size as the negative you intend to make. You see clearly what you are going to get in the photograph—and the added brilliance of the image enables you to judge tone values, shadow effects and color more accurately than ever. For focusing with critical sharpness, there is a magnifier folded in the hood which enlarges the image on the ground glass 4 times.

The taking lens is a coated Zeiss Tessar  $f/3.5$ , mounted in a Compur Rapid shutter permitting exposures at B and 1 to  $1/500$  sec. The shutter has internal flash synchronization. See reverse side.

The Zeiss Tessar has superior color correction and definition—the world's outstanding lens



**EXTRABRITE** focusing screen renders the most brilliant image up to the very corners.



### MAGNIFIER

For critical focusing, a 4 times magnifying lens is built into the hood. It is hinged and can be folded away at will.

### DIRECT VIEW-FINDER

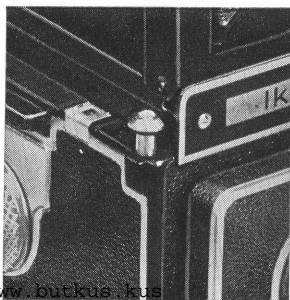
The front plate of the hood is collapsible in its frame, and the back has a square peep hole, thus creating a direct eye-level view-finder—an advantage in fast work and flash photography.



## SO EASY TO OPERATE

You'll be impressed with the clever way in which all controls have been placed within easy reach of your finger-tips. The release of the shutter, either by hand or cable, is on the top edge of the camera body. Next to it, is a red signal which assures you that you have advanced the film after the previous exposure. An automatic lock prevents accidental double exposures and blanks. When you look down at the image screen, your eyes take in two little windows with scales, located on the sides of the viewing lens. One scale shows the diaphragm setting, the other scale the shutter speed.

The Ikoflex II-A has a sturdy light-weight metal body. It is covered with black leather and handsomely trimmed with chrome. It measures only  $3\frac{3}{4} \times 3\frac{7}{8} \times 5\frac{1}{2}$ " and weighs but 38 oz.—so light and compact, you'll find it an agreeable companion, even on long and strenuous hiking trips.



### FINGER-TIP RELEASE


The finger-tip release of the shutter is located on top edge of the camera, within easy reach of your thumb as you hold the camera. (See Page 11.) Aside of the fingertip release is a red signal showing that you have advanced the film after the previous exposure.

[www.butkus.us](http://www.butkus.us)

### • BRIGHTEST IMAGE •

World-famous Zeiss Tessar f/3.5 lens (coated)  
Compur Rapid Shutter with flash synchronization





This manual is for reference and historical purposes, all rights reserved.

**This page is copyright© by M. Butkus, NJ.**

This page may not be sold or distributed without the expressed permission of the producer  
I have no connection with any camera company

On-line camera manual library

This is the full text and images from the manual. This may take 3 full minutes for the PDF file to download.

**If you find this manual useful, how about a donation of \$3 to: M. Butkus, 29 Lake Ave., High Bridge, NJ 08829-1701 and send your e-mail address so I can thank you. Most other places would charge you \$7.50 for a electronic copy or \$18.00 for a hard to read Xerox copy.**

**This will allow me to continue to buy new manuals and pay their shipping costs.**

**It'll make you feel better, won't it?**

**If you use Pay Pal or wish to use your credit card,  
click on the secure site on my main page.**

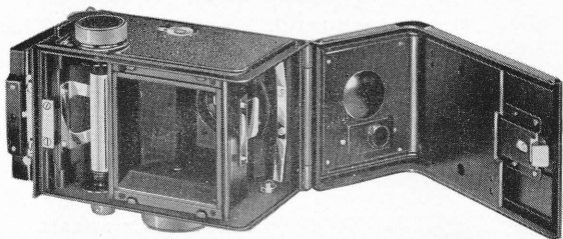
PayPal Name Lynn@butkus.org

Venmo @mike-butkus-camera Ph. 2083

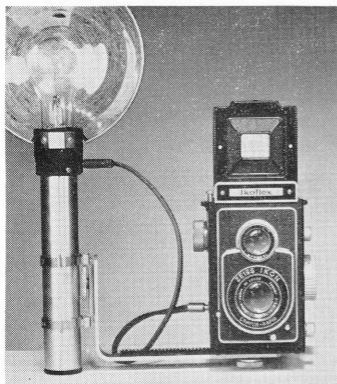
[www.PayPal.me/lynnbutkus](http://www.PayPal.me/lynnbutkus)



Showing the operation of the focusing wheel on the right side of the Ikoflex II-A. Next to the focusing wheel is the depth of focus scale. Engraved on the hood is an exposure table.



Hinged back permits quick, easy loading as with any roll-film camera.



Compur Rapid Shutter of the Ikoflex II-A has internal flash synchronization. Flash cable connects in socket on side of camera.



*Zeiss Ikon*  
**IKOFLEX II-A**

The dimensions of the closed camera are  $3\frac{3}{4}$  x  $3\frac{7}{8}$  x  $5\frac{1}{2}$ "', and the weight is but 38 ounces. It is easy to carry wherever you go.