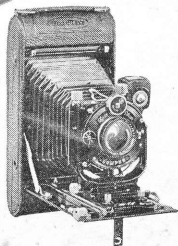


Leiss Ikon
Cameras



Zeiss Ikon Cameras





The photos illustrate the results obtained with a Carl Zeiss "Tessar" $f:4.5$ of $5\frac{1}{4}$ inch focal length in combination with "Distar" and "Proxar" Supplementary Lenses on an Ideal B Camera. The top left-hand picture was taken with a "Distar", and the right-hand one with a "Proxar". The bottom picture, from exactly the same point of view, with the "Tessar".



ZEISS Ikon is the amalgamation of the former firms of Contessa-Nettel, Ernemann, Goerz and Ica, Europe's largest and best known camera makers.

The many distinctive features of Zeiss Ikon Cameras, their advanced design and unexcelled quality of material and workmanship, have set a new conception of camera standards. Zeiss Ikon Cameras are, indeed, the creations of master camera builders. They arouse that pride of possession which comes only from owning really fine things, and they will inspire their enthusiastic owners to bigger and better photographic accomplishments.

With the exception of a few simpler models, Carl Zeiss Lenses are standard equipment throughout.


On page 49 is a list of cameras, on which Carl Zeiss "Distar" and "Proxar" Supplementary Lenses may be used. The addition of a "Distar" to the Tessar means a larger image of distant objects, and improved perspective of near ones, while the addition of a "Proxar" shortens the focus of the "Tessar". "Proxar" increases the angle of view, and will, therefore, improve results in photographing interiors, street scenes, etc.

There are so many possibilities for the employment of "Distar" and "Proxar" Lenses, that the prospective buyer may well select a camera, on which they may be used.

All Zeiss Ikon Cameras take standard American plates and films. Cut films may be used in plate holders with the aid of cut film sheaths. Tripod sockets have standard thread; focusing scales are marked in feet, and diaphragm markings are in the familiar *f* system.

A completely equipped Service Department is maintained in New York, where all necessary spare parts are stocked, and repairs made by a staff of expert mechanics.

To possess a Zeiss Ikon Camera means to own quite the best camera that may be had.



This manual is for reference and historical purposes, all rights reserved.

This page is copyright© by M. Butkus, NJ.

This page may not be sold or distributed without the expressed permission of the producer

I have no connection with any camera company

On-line camera manual library

This is the full text and images from the manual. This may take 3 full minutes for the PDF file to download.

If you find this manual useful, how about a donation of \$3 to: M. Butkus, 29 Lake Ave., High Bridge, NJ 08829-1701 and send your e-mail address so I can thank you. Most other places would charge you \$7.50 for a electronic copy or \$18.00 for a hard to read Xerox copy.

This will allow me to continue to buy new manuals and pay their shipping costs.

It'll make you feel better, won't it?

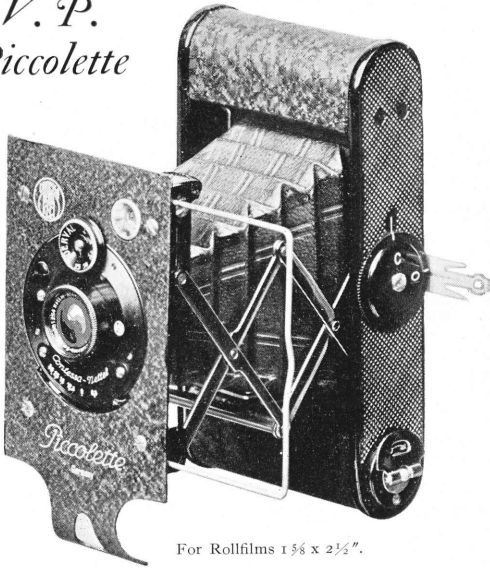
**If you use Pay Pal or wish to use your credit card,
click on the secure site on my main page.**

Donate: www.PayPal.me/butkus

venmo: @mike-butkus-camera Ph. 2083

Leiss Ikon Cameras

V. P. Piccolette



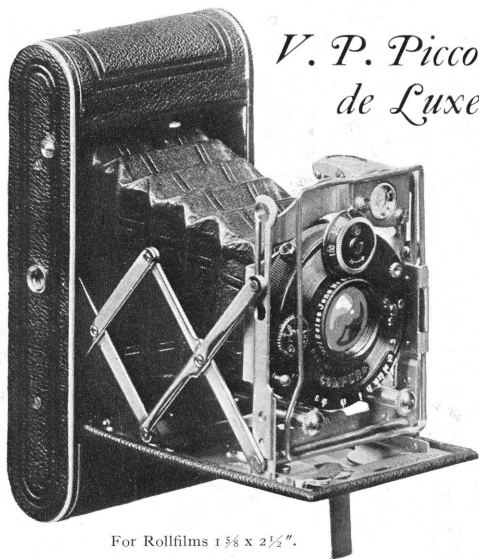
For Rollfilms $1\frac{5}{8} \times 2\frac{1}{2}$ ".

THE Vest Pocket Piccolette is a small, compact camera, conveniently carried in one's pocket. Being a fixed focus model, the Piccolette, when open, is immediately ready to make snapshots. The Iconometer as well as the brilliant finder show the actual composition of the view. The trellis supports insure rigidity and, thereby, parallelism of the lens with the film.

A special feature of all Piccolette and Cocarette Cameras is the convenient method of loading. The film race positively guides the film and prevents buckling. See illustration on page 15.

Picture Size. $1\frac{5}{8} \times 2\frac{1}{2}$ inch
 Lens. Nettar Anastigmat $f:6.3$ of 3 inch focal length
 Shutter. Derval with cable and finger release
 Speeds. $1/25$, $1/50$, $1/100$ sec. Time and Bulb
 Camera Size. $1 \times 2\frac{1}{2} \times 4\frac{3}{4}$ inch. Weight: 9 ozs.

Leiss Ikon Cameras



V. P. Piccolette de Luxe

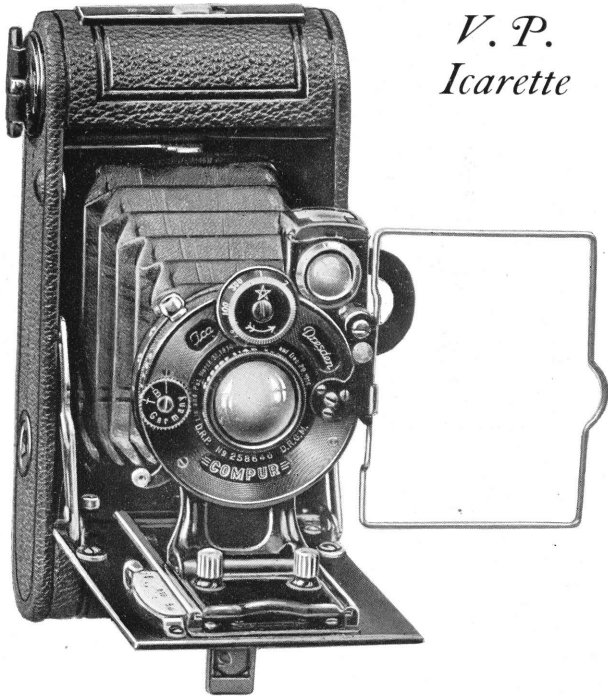
For Rollfilms $1\frac{5}{8} \times 2\frac{1}{2}$ ".

THE Vest Pocket Piccolette de Luxe is preferred by more exacting amateurs, for it incorporates many refinements. The trellis supports are guided in a grooved bed, which gives rigidity to the front board. The Compur Shutter has eight speeds, ranging from 1 to $1/300$ sec., enough for fast moving objects. The camera may be focused from 5 ft. to infinity. It is covered with selected brown leather and has brown leather bellows, while the nickel-plated fittings impart a luxurious appearance. A reversible brilliant and an Iconometer finder, as well as an improved film spool carrier, are part of this fascinating camera. The V. P. Piccolette de Luxe produces excellent pictures, from which enlargements up to 8 x 10 inch may be made. The camera is furnished in a brown leather carrying case.

Picture Size.....	$1\frac{5}{8} \times 2\frac{1}{2}$ inch
Lens.....	Zeiss Tessar $f:4.5$ of 3 inch focal length
Shutter.....	Compur with cable and finger release
Speeds.....	1 to $1/300$ sec. Time and Bulb
Camera Size.....	$1\frac{1}{4} \times 2\frac{1}{2} \times 4\frac{3}{4}$ inch. Weight: 12 ozs.

Leiss Ikon Cameras

*V. P.
Icurette*



For Rollfilms $1\frac{5}{8} \times 2\frac{1}{2}$ ".

THE Vest Pocket Icurette is a delightful and perfectly constructed little instrument. It is built of metal throughout, finished in polished black enamel with nickel trimmings and covered with fine grain leather. Besides the usual brilliant view finder, it has an Iconometer finder, enabling the photographer to observe the picture full size from eye level position. The Compur Shutter has eight speeds ranging from 1 to $1/300$ second. This speed arrests motion in photographing rapidly moving objects, such as athletes in action, races, diving, airplanes in flight.

Zeiss Ikon Cameras

The Zeiss Tessar Lens on the V. P. Icarette produces depth of field with illumination and definition, the same as it does in motion pictures, where we all marvel at the perfect detail, even when enlarged to the size of a theater screen. Thus brilliant enlargements up to 8 x 10 inch, or even more, can be made from negatives taken with the V. P. Icarette.

The V. P. Icarette may be used in either horizontal or vertical positions. The shutter can be operated with its flexible cable release on time or bulb for slow exposures of any duration. Thus, this very versatile little camera is as suitable for interior pictures and even portraiture, as it is for snapshots.

Due to its small film size the V. P. Icarette is a very economical camera to operate. In fact, it costs no more to use a V.P. Icarette and having postal-card size enlargements made, than to use a postal-card size camera. The results are as good if not better, the camera is easier to operate, and more convenient to carry. The V.P. Icarette is furnished in a leather case.

Picture Size.....	1 $\frac{5}{8}$ x 2 $\frac{1}{2}$ inch
Lens.....	Zeiss Tessar <i>f</i> :4.5 of 3 inch focal length
Shutter.....	Compur with cable and finger release
Speeds.....	1 to 1/300 sec. Time and Bulb
Camera Size.....	1 $\frac{1}{4}$ x 2 $\frac{3}{4}$ x 5 $\frac{1}{8}$ inch. Weight: 14 ozs.



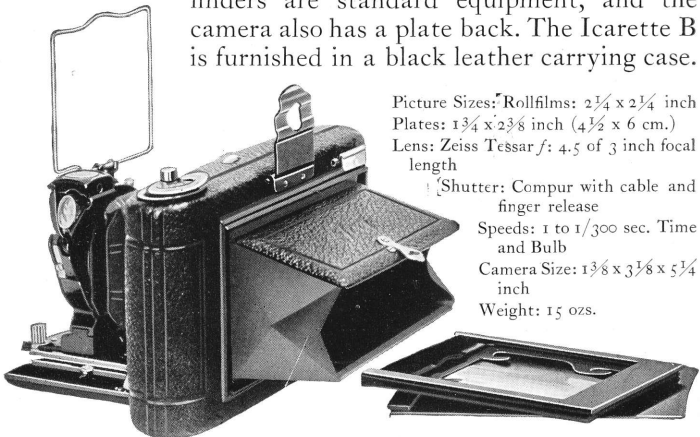
Leiss Ikon Cameras



*Icarette
B*

For Rollfilms $2\frac{1}{4} \times 2\frac{1}{4}$ "
and Plates $4\frac{1}{2} \times 6$ cm.
($1\frac{3}{4} \times 2\frac{3}{8}$ ")

THIS miniature camera embodies many original features. The high shutter speed, $1/300$ sec., will arrest rapidly moving objects. It is equally capable of portraiture and interior studies. Focusing is done by a focusing lever to as close as 3 ft. The Zeiss Tessar Lens insures negatives, which can be enlarged up to 11×14 inch. The brilliant and the Iconometer finders are standard equipment, and the camera also has a plate back. The Icarette B is furnished in a black leather carrying case.



Picture Sizes: Rollfilms: $2\frac{1}{4} \times 2\frac{1}{4}$ inch
Plates: $1\frac{3}{4} \times 2\frac{3}{8}$ inch ($4\frac{1}{2} \times 6$ cm.)

Lens: Zeiss Tessar $f: 4.5$ of 3 inch focal length

Shutter: Compur with cable and finger release

Speeds: 1 to $1/300$ sec. Time and Bulb

Camera Size: $1\frac{3}{8} \times 3\frac{1}{8} \times 5\frac{1}{4}$ inch

Weight: 15 ozs.

Leiss Ikon Cameras



www.butkus.us

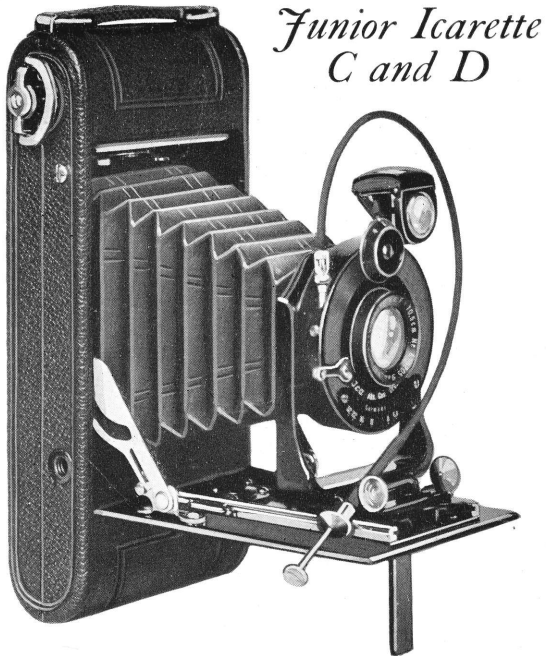
Junior Icarettes and Cocarettes

WHENEVER price is an important consideration, and yet a camera is required which will give all-round satisfaction, the Junior models, offered on pages 10 and 11, will make a strong appeal.

They combine simple design with dependable, sturdy construction, and operate with a minimum number of adjustments.

The Junior models are made in two sizes: Model C for photos of $2\frac{1}{4} \times 3\frac{1}{4}$ inch, Model D for photos of $2\frac{1}{2} \times 4\frac{1}{4}$ inch.

All Juniors are equipped with anastigmat lenses, fast enough for snapshots, even in poor light. The lenses give good definition, allowing enlargements of many diameters. The shutters are automatic permitting exposures of $1/25$, $1/50$, $1/100$ second, besides time and bulb. The body of the Juniors is of light metal, which insures stability, and their folding standard carriage gives perfect rigidity to the lens front.

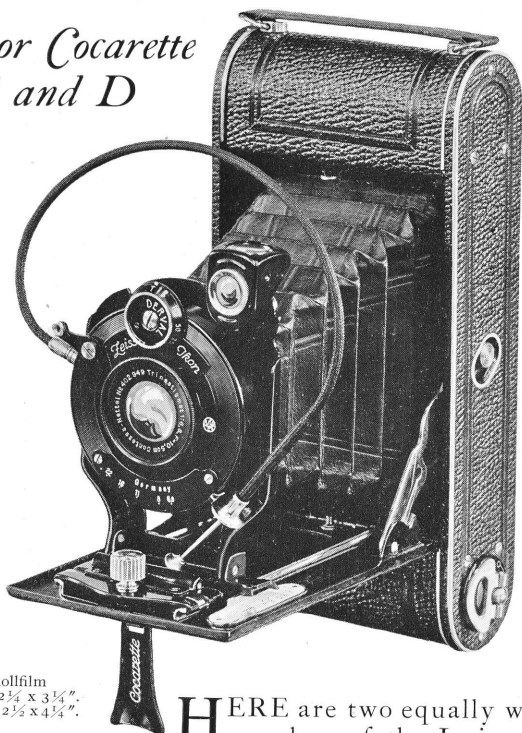
Leiss Ikon Cameras*Junior Icarette
C and D*

For Rollfilm: Model C, $2\frac{1}{4} \times 3\frac{3}{4}$ " ; Model D, $2\frac{1}{2} \times 4\frac{1}{4}$ ".

THE elegantly finished Junior Icarettes are covered with black leather, have leather bellows and nickel trimming. It is a real manufacturing achievement that these models can be offered at such low prices. See details on page 9.

Picture Size Model C, $2\frac{1}{4} \times 3\frac{3}{4}$ inch. Model D, $2\frac{1}{2} \times 4\frac{1}{4}$ inch
 Lens Novar $f:6.3$. Model C, $4\frac{1}{4}$ inch; Model D, $5\frac{1}{4}$ inch focal length
 Shutter Automatic with finger and cable release
 Speeds $1/25$ to $1/100$ sec. Time and Bulb
 Camera Size Model C, $1\frac{1}{4} \times 3\frac{3}{4} \times 7$ inch. Model D, $1\frac{5}{8} \times 3\frac{7}{8} \times 8\frac{1}{4}$ inch
 Weight Model C, 21 ozs. Model D, 28 ozs.

Junior Cocarette
C and D

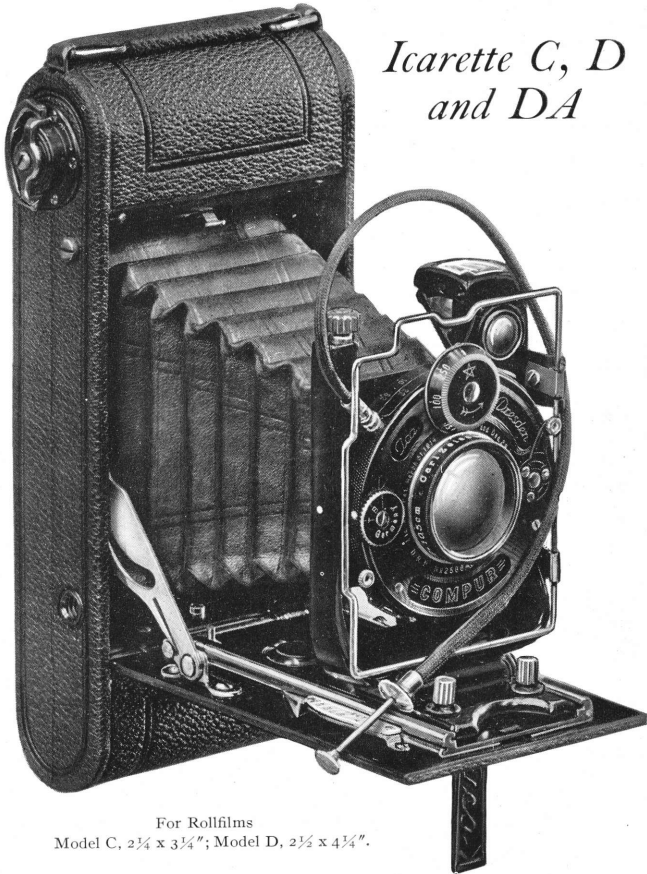


For Rollfilm
Model C, $2\frac{1}{4} \times 3\frac{1}{4}$ in.
Model D, $2\frac{1}{2} \times 4\frac{1}{4}$ in.

HERE are two equally worthy members of the Junior family that will make good outdoor companions. Their many advantages have been enumerated on page 9. The patented film threading mechanism makes the Cocarettes the easiest to load of all rollfilm cameras and assures perfect flatness of the film. Thus, out-of-focus negatives, due to buckling of the film, are eliminated. Elegantly finished in black leather and nickel.

Picture Size Model C, $2\frac{1}{4} \times 3\frac{1}{4}$ inch. Model D, $2\frac{1}{2} \times 4\frac{1}{4}$ inch
Lens Trinastigmat/f:6.8 Model C, $4\frac{1}{4}$ inch; Model D, $5\frac{1}{4}$ inch focal length
Shutter Dervall Automatic with cable and finger release
Speeds 1/25 to 1/100 sec. Time and Bulb
Camera Size Model C, $1\frac{3}{8} \times 3\frac{3}{8} \times 6\frac{7}{8}$ inch. Model D, $1\frac{1}{2} \times 3\frac{1}{2} \times 8$ inch
Weight Model C, 19 ozs. Model D, 26 ozs.

Leiss Ikon Cameras



*Icarette C, D
and DA*

For Rollfilms
Model C, $2\frac{1}{4} \times 3\frac{1}{4}$ " ; Model D, $2\frac{1}{2} \times 4\frac{1}{4}$ " .

THE Icarette Models C and D are identical, except for size and weight. They are built entirely of durable light metal, attractively finished in black enamel and nickel, and covered with fine grain pin seal leather. The backs of these models have end locks, secure yet easy to put on or take off and they are positively light-proof.

Zeiss Ikon Cameras

The improved film holder insures even, free winding of the film, with no possibility of the film climbing on the spool ends, tearing or binding, and the winding key will never chew out the slot of the spool.

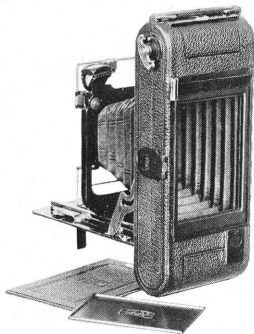
The front has screw operated vertical movement. There is a brilliant reflecting finder, also an Iconometer wire finder, which always indicates the correct view, even when the front is elevated. Focusing is accomplished with a focusing lever.

The optical equipment is the Carl Zeiss Tessar $f:4.5$ of $4\frac{1}{8}$ inch focus in the Model C and $4\frac{3}{4}$ inch focus in the Model D.

The shutter is the Compur with speeds from 1 to $1/250$ second, beside time and bulb exposures.

A special model of the Icarette D is called Icarette DA. Like the Icarette D it takes rollfilm $2\frac{1}{2} \times 4\frac{1}{4}$ inch, but it is furthermore equipped with an adapter for the use of plates or cut films $2\frac{1}{2} \times 3\frac{1}{2}$ inch ($6\frac{1}{2} \times 9$ cm.), and of film packs $2\frac{1}{4} \times 3\frac{1}{4}$ inch.

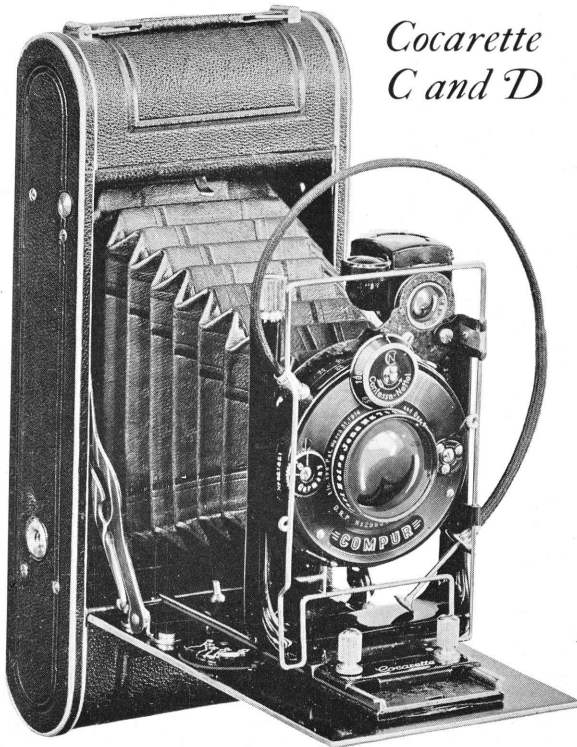
As a constant companion no better camera could be selected than one of the Icarette Models C or D. A leather case is furnished with each camera.



Picture Size. Model C, $2\frac{3}{4} \times 3\frac{1}{4}$ inch. Model D, $2\frac{1}{2} \times 4\frac{1}{4}$ inch
Lens. Zeiss Tessar $f:4.5$ Model C, $4\frac{1}{8}$ inch; Model D and DA, $4\frac{3}{4}$ inch focal length
Shutter. Compur with cable and finger release
Speeds. 1 to $1/250$ sec. Time and Bulb
Camera Size. Model C, $1\frac{3}{8} \times 3\frac{3}{8} \times 7$ inch. Model D and DA, $1\frac{5}{8} \times 3\frac{3}{4} \times 8\frac{1}{4}$ inch
Weight. Model C, 25 ozs. Model D, 31 ozs. Model DA, 33 ozs.



Leiss Ikon Cameras



*Cocarette
C and D*

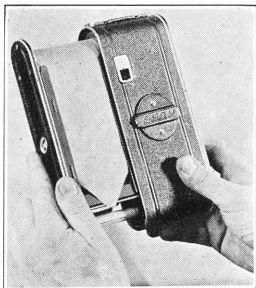
For Rollfilms Model C, $2\frac{1}{4} \times 3\frac{1}{4}$ "; Model D, $2\frac{1}{2} \times 4\frac{1}{4}$ ".

THESE de luxe cameras incorporate all the latest improvements. They are covered with fine saffron brown leather, imparting an air of distinction to the camera. The focusing is done with a focusing lever. The objective carrying standard is a single casting with built-in adjustment screw for vertical movement.

The bellows are of high grade brown leather. A brilliant finder with level, as well as the well known eye-level Iconometer finder, are fitted to the camera. Both models are

Leiss Ikon Cameras

supplied with the Carl Zeiss Tessar $f:4.5$ Lens and the Compur Shutter, giving eight speed variations. The cameras are furnished in brown leather cases.



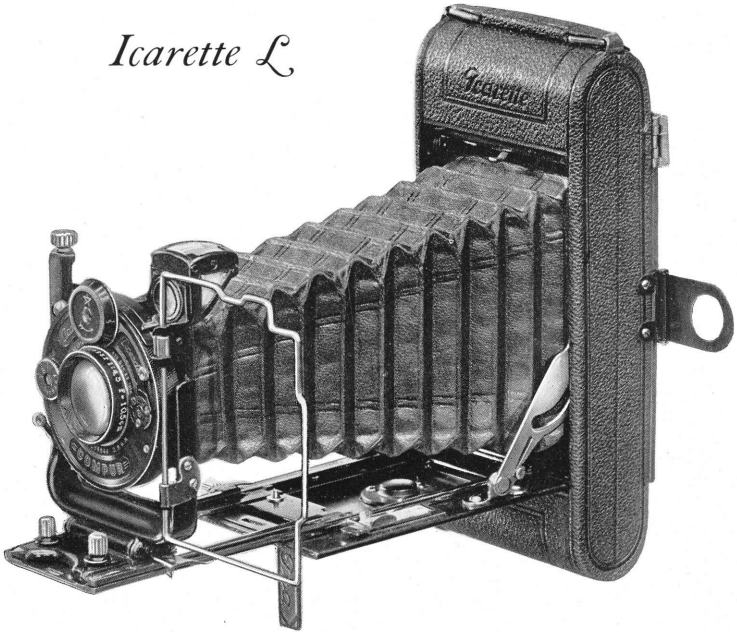
Observe the convenient method of loading the film holder and how the film race prevents buckling of the film.

Picture Size..... Model C, $2\frac{1}{4} \times 3\frac{1}{4}$ inch; Model D, $2\frac{1}{2} \times 4\frac{1}{4}$ inch
Lens..... Zeiss Tessar $f:4.5$. Model C, $4\frac{3}{8}$ inch; Model D, $4\frac{3}{4}$ inch focal length
Shutter..... Compur with cable and finger release
Speeds..... 1 to $1/250$ sec. Time and Bulb
Camera Size..... Model C, $1\frac{1}{4} \times 3 \times 6\frac{1}{2}$ inch; Model D, $1\frac{1}{2} \times 3\frac{1}{4} \times 8$ inch
Weight..... Model C, 22 ozs. Model D, 28 ozs.



Leiss Ikon Cameras

Icarette L

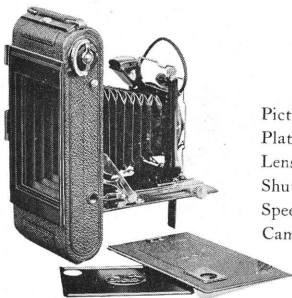


For Rollfilms $2\frac{1}{4} \times 3\frac{1}{4}$ " and Plates $2\frac{1}{2} \times 3\frac{1}{2}$ ".

THE Icarette L is a rollfilm and plate camera, having 8 inch double extension bellows. It takes six exposure rollfilms $2\frac{1}{4} \times 3\frac{1}{4}$ inch of any make. The back is fitted with a panel which is readily removable so that a plate holder, film pack adapter or focusing back may be inserted for the use of plates or cut films $2\frac{1}{2} \times 3\frac{1}{2}$ inch ($6\frac{1}{2} \times 9$ cm.) as well as of film packs $2\frac{1}{4} \times 3\frac{1}{4}$ inch. The 8 inch bellows permit the use of a Distar Lens, and when plates are used, objects within two feet of the camera may be photographed. Proxar Lenses for wide-angle work may be used with the Icarette L, making it a universal camera for all-round photographic work.

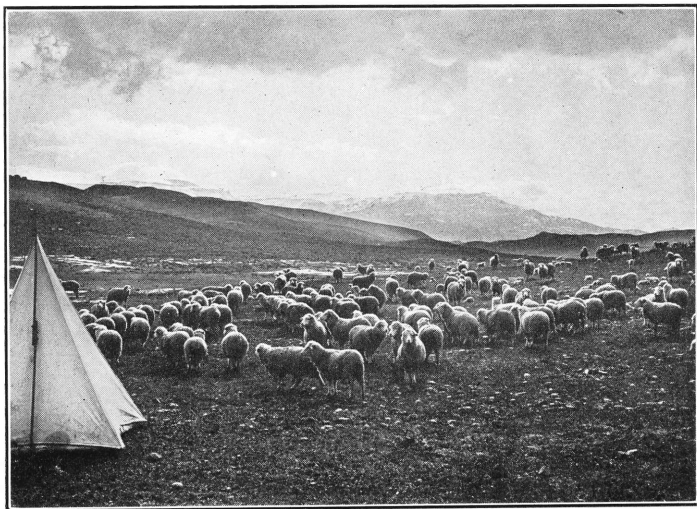
Leiss Ikon Cameras

The front can be raised or lowered by means of a micrometer screw. A brilliant finder and the eye-level Iconometer finder allow one to correctly center the picture. The camera is supplied in a leather case.

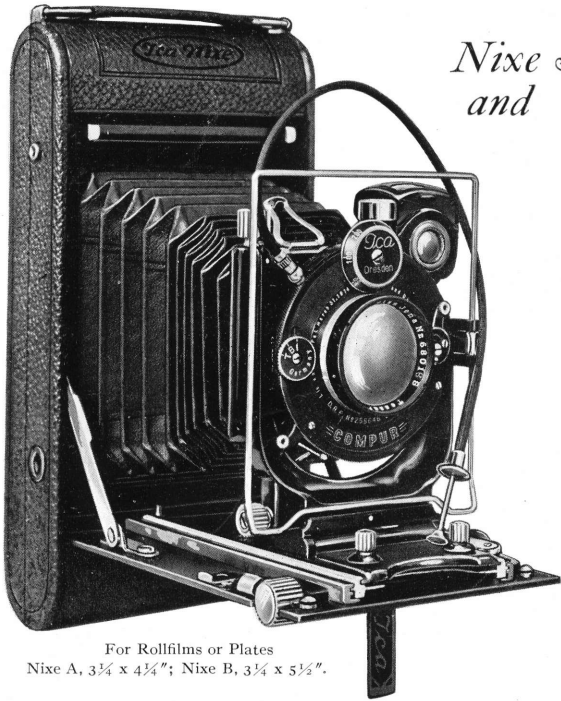


Picture Size: Rollfilms: $2\frac{1}{4} \times 3\frac{1}{4}$ inch
Plates: $2\frac{1}{2} \times 3\frac{1}{2}$ inch ($6\frac{1}{2} \times 9$ cm.)
Lens: Zeiss Tessar $f:4.5$ of $4\frac{1}{8}$ inch focal length
Shutter: Compur with cable and finger release
Speeds: 1 to $1/250$ sec. Time and Bulb
Camera Size: $1\frac{1}{2} \times 3\frac{5}{8} \times 7\frac{1}{8}$ inch. Weight: 26 ozs.

Supplementary Distar and Proxar Lenses may be used on this model. See page 49.



Leiss Ikon Cameras



*Nixe A
and B*

For Rollfilms or Plates
Nixe A, $3\frac{1}{4} \times 4\frac{1}{4}$ " ; Nixe B, $3\frac{1}{4} \times 5\frac{1}{2}$ ".

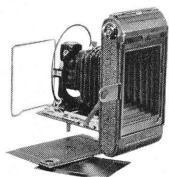
NO more complete or better film cameras have ever been produced. These most unusual models can be used either with rollfilms or plates. Constructed entirely of a special light metal alloy, they are attractively finished in durable black enamel with nickel trimmings, and covered with selected black grain leather.

The bellows extension is essential for telephoto work with the Distar Lens. For close work the camera will give excellent results with the Proxar supplementary lens. The "Nixe" has ample horizontal and vertical front movements, useful for photographing buildings or eliminating objectionable fore-

Leiss Ikon Cameras

ground. The adjustments are operated by micrometer screws.

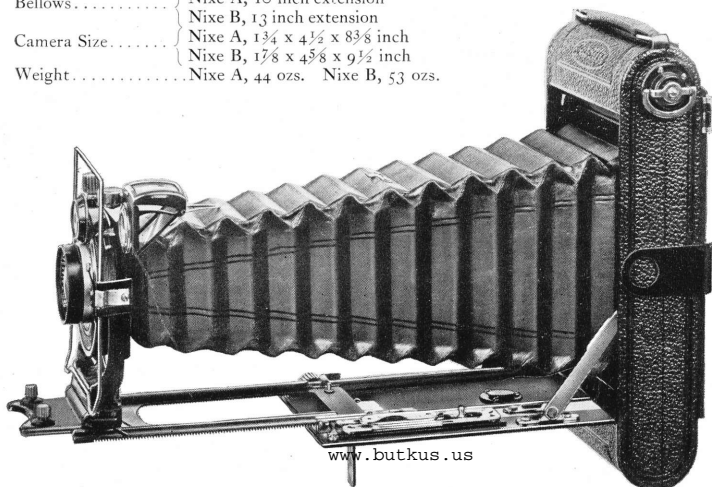
In addition to the usual brilliant finder, an Iconometer finder is fitted. The image shown in the wire frame, when looking through the rear peep-hole, is always correct, regardless of the position of the camera front or bellows extension.



The back of the "Nixe" is fitted with a removable panel and pressure plate. When these are removed, a focusing back or plate holder may be inserted, which may be obtained separately.

The new film-holding device simplifies loading and assures perfect alignment, supplying just sufficient tension to keep the film absolutely flat at all times. The camera is furnished in a leather case.

Picture Size.....	Nixe A, $3\frac{1}{4} \times 4\frac{1}{4}$ inch.	Nixe B, $3\frac{1}{4} \times 5\frac{1}{2}$ inch.
Lens.....	Zeiss Tessar $f:4.5$ Nixe A, $5\frac{1}{4}$ inch; Nixe B, 6 inch focal length	
Shutter.....	Compur with cable and finger release	
Speeds.....	1 to $1/200$ sec. Time and Bulb	
Bellows.....	Nixe A, 10 inch extension	
	Nixe B, 13 inch extension	
Camera Size.....	Nixe A, $1\frac{3}{4} \times 4\frac{1}{2} \times 8\frac{3}{8}$ inch	
	Nixe B, $1\frac{7}{8} \times 4\frac{5}{8} \times 9\frac{1}{2}$ inch	
Weight.....	Nixe A, 44 ozs.	Nixe B, 53 ozs.

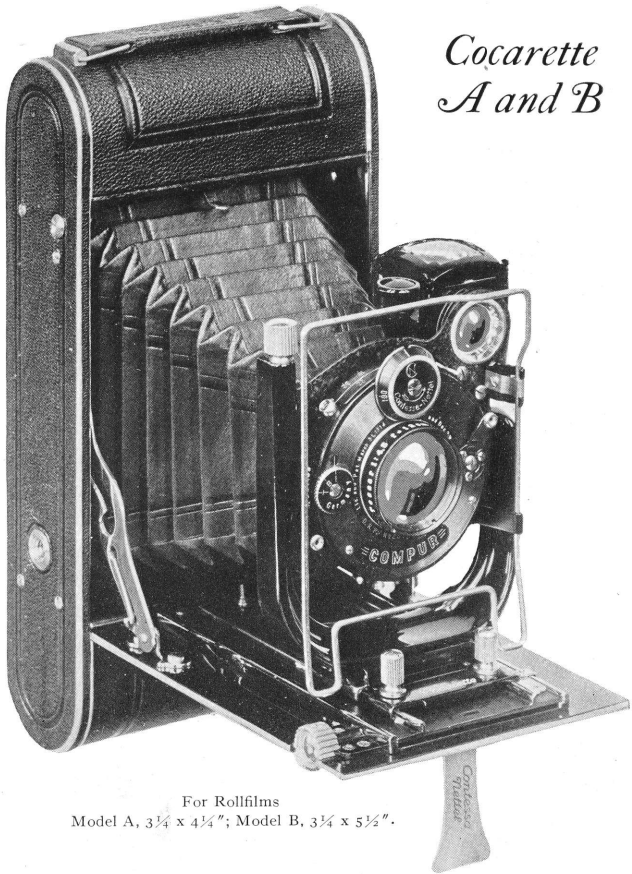


www.butkus.us

Supplementary lenses Distar and Proxar may be used on these models. See page 49.

Leiss Ikon Cameras

*Cocarette
A and B*



For Rollfilms
Model A, $3\frac{1}{4} \times 4\frac{1}{4}$ " ; Model B, $3\frac{1}{4} \times 5\frac{1}{2}$ " .

THEIR appearance combined with the sturdy construction will appeal to those desiring an efficient camera of a pretentious size.

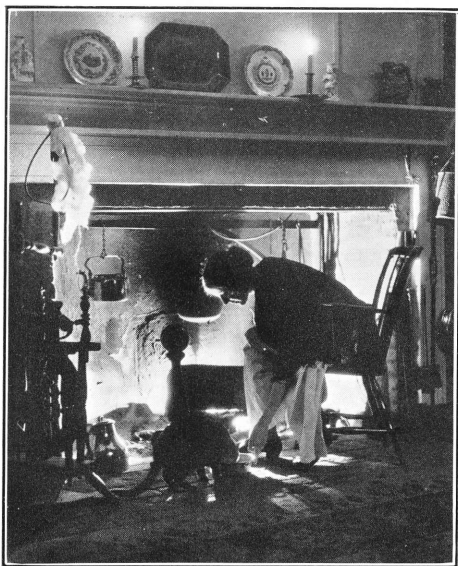
The Cocarette A takes pictures in the popular size of $3\frac{1}{4} \times 4\frac{1}{4}$ inch, whereas the Cocarette B takes postal-card size pictures. Both models are equipped with the fast Zeiss Tessar

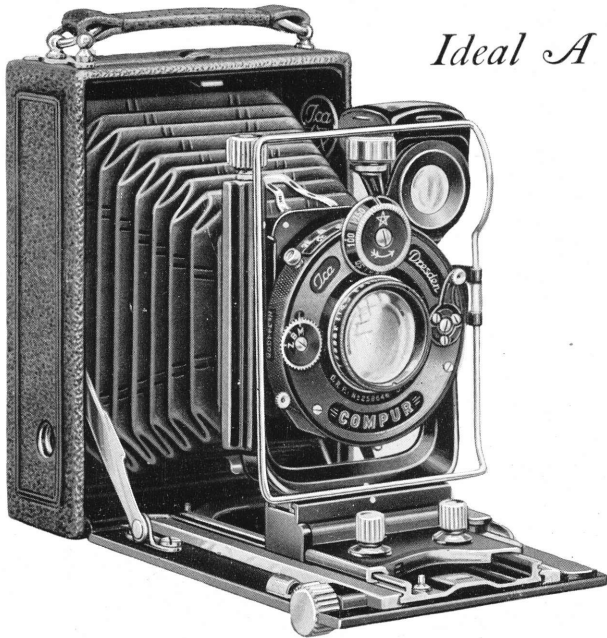
Zeiss Ikon Cameras

f:4.5 and the Compur Shutter. The camera is easily and quickly loaded.

It is equipped with a reversible brilliant finder and also an Iconometer finder. The body of the camera is made of aluminum, covered with brown morocco leather. The dull white silver finish of the metal trimmings, together with the brown leather covering and brown leather bellows make this model strikingly beautiful. Model A takes rollfilms for 6 or 12 exposures; Model B for 6 or 10 exposures. The cameras are supplied in a leather case.

Picture Size..... Model A, $3\frac{3}{4} \times 4\frac{1}{4}$ inch. Model B, $3\frac{3}{4} \times 5\frac{1}{2}$ inch
Lens..... Zeiss Tessar *f*:4.5 Model A, $4\frac{3}{4}$ inch; Model B, 6 inch focal length
Shutter..... Compur with cable and finger release
Speeds..... Model A, 1 to $1/250$ sec. Model B, 1 to $1/200$ sec. Time and Bulb
Camera Size..... Model A, $1\frac{1}{2} \times 4 \times 8$ inch. Model B, $1\frac{3}{4} \times 4\frac{1}{2} \times 9$ inch
Weight..... Model A, 34 ozs. Model B, 50 ozs.



*Ideal A*

For Plates $2\frac{1}{2} \times 3\frac{1}{4}$ " ($6\frac{1}{2} \times 9$ cm.) and Film Packs $2\frac{1}{4} \times 3\frac{1}{4}$ ".]

FOR its size no more versatile camera can be had than the Ideal A. It is constructed of metal, finished in polished black enamel, and covered with pin grain seal leather. The $8\frac{1}{2}$ inch double extension permits focusing on objects as close as nine inches from the camera, a decided advantage in making copies or photographing small objects.

Zeiss Distar and Proxar Lenses can be used in combination with the Zeiss Tessar $f:4.5$, of $4\frac{3}{4}$ inch focal length.

The lens panel of the Ideal A has both vertical and horizontal movements of one inch, considerable for a camera of its size. These adjustments, together with the long extension, are most important in architectural photography.

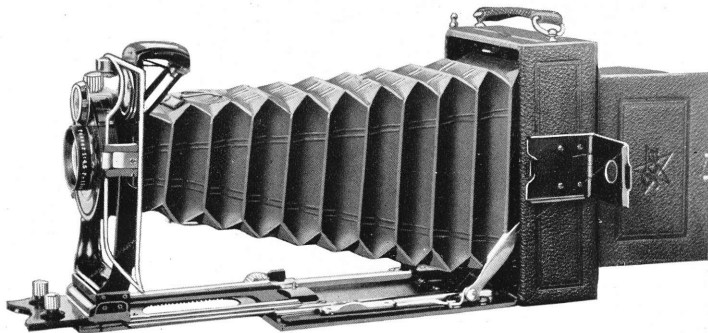
Leiss Ikon Cameras

The Iconometer wire finder furnished with the Ideal A is absolutely accurate, indicating correctly the front movements as well as the correct view when the Distar Lens is used.

For critical work, focusing may be done while viewing the image on the hooded ground glass. The movable bed is operated by rack and pinion adjustment and can be locked at any desired point. The bellows is fitted with an automatic take-up, eliminating the possibility of sagging and perhaps cutting off part of the picture.

With each camera are supplied three single metal plate holders, film pack adapter and leather carrying case.

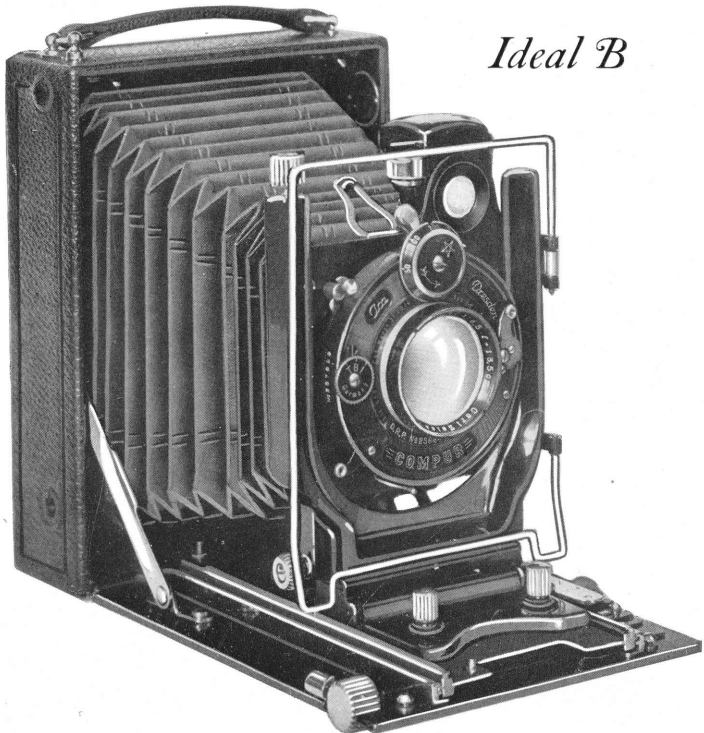
Picture Size.....	For Plates: $2\frac{1}{2} \times 3\frac{1}{2}$ inch.	For Film Packs: $2\frac{1}{4} \times 3\frac{1}{4}$ inch
Lens.....	Zeiss Tessar $f:4.5$ of $4\frac{3}{4}$ inch focal length	
Shutter.....	Compur with cable and finger release	
Speeds.....	1 to $1/250$ sec. Time and Bulb	
Bellows.....	Black leather, $8\frac{1}{2}$ inch extension	
Camera Size.....	$2 \times 3\frac{3}{4} \times 5\frac{1}{4}$ inch. Weight: $26\frac{1}{2}$ ozs.	



Supplementary lenses Distar and Proxar may be used on this model. See page 49.



Leiss Ikon Cameras



Ideal B

For Plates and Film Packs $3\frac{1}{2} \times 4\frac{3}{4}$ " (9 x 12 cm.)

THE Ideal B is a camera of larger proportions than any of the foregoing models.

The construction is entirely of metal, insuring strength and rigidity. The finish is black enamel and nickel, the covering of fine grain seal leather.

Its bellows extension of $11\frac{1}{2}$ inches is sufficient to permit the use of the Distar Lens. Photographs can be made of objects within 10 inches of the camera, a necessity when making copies and pictures of small objects.

Zeiss Ikon Cameras

The front has a vertical movement of $1\frac{1}{4}$ inches and a horizontal movement of $1\frac{3}{8}$ inches. There is also a vertical swing back, quite an innovation in so small a camera.

One of the most important features of the Ideal B is the Iconometer, the most accurate finder that can be fitted to a camera. Holding the camera at the eye's level, the view is observed through the Iconometer. As the metal frame moves forward, backward, up or down, with the lens, every variation in the angle of view, due to extending the bellows, is accurately registered. A large brilliant reflecting finder is also provided.

Metal kits may be had for both plate holders and film pack adapter so that $3\frac{1}{4} \times 4\frac{1}{4}$ inch plates or film packs may also be used.

The shutter is interchangeable and may be easily removed, being held in place with a bayonet lock.

A leather carrying case, three single metal plate holders, and film pack adapter are supplied with every camera.

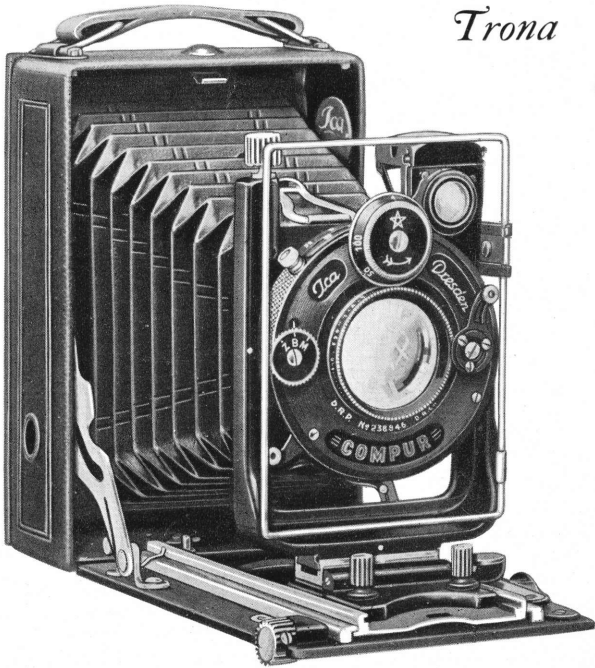
Picture Size.....	$3\frac{1}{2} \times 4\frac{3}{4}$ inch (9 x 12 cm.)
Lens.....	Zeiss Tessar $f:4.5$ of $5\frac{1}{4}$ or 6 inch focal length
Shutter.....	Compur with cable and finger release
Speeds.....	1 to $1/200$ sec. Time and Bulb
Bellows.....	Black leather $11\frac{1}{2}$ inch extension
Camera Size.....	$2\frac{3}{8} \times 5 \times 6\frac{5}{8}$ inch. Weight: 46 ozs.

Supplementary lenses Distar and Proxar may be used on this model. See page 49.



Leiss Ikon Cameras

Trona



For Plates and Film Packs $3\frac{1}{4} \times 4\frac{1}{4}$ ".

THE popular size of the pictures made with the Trona ($3\frac{1}{4} \times 4\frac{1}{4}$ inch) and the general make-up of the instrument appeal to those who require a very compact camera, making a picture of suitable size as a contact print, and combining in its construction every required adjustment for serious photography.

A large protecting hood over the ground glass back obviates the use of a focusing cloth.

The Icometer wire finder is the most accurate of all camera finders. It indicates correctly the view included when

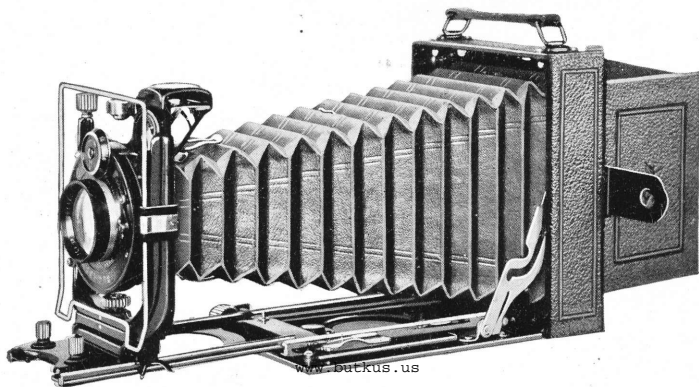
Zeiss Ikon Cameras

the lens front is used for vertical or horizontal movement. Even when a supplementary lens such as the Zeiss Distar is used, the Iconometer shows the correct view.

The maximum bellows extension is ten inches, so that objects within twelve inches of the camera may be photographed without a supplementary lens. For distant objects this long bellows extension can be used to excellent advantage with a Zeiss Distar Lens. When extended, the front stops automatically, focused for distance. Focusing is done with rack and pinion which may be locked for any distance.

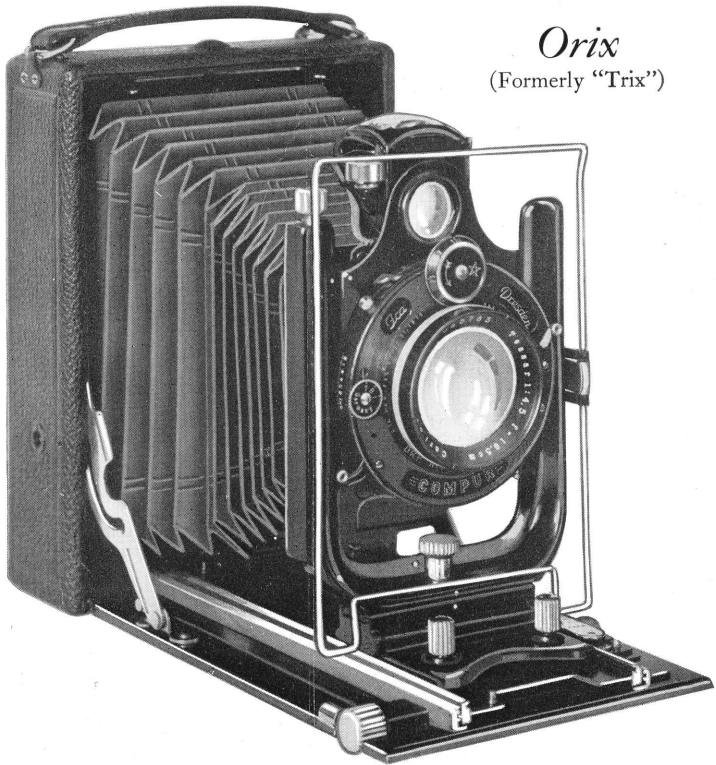
With each camera are supplied three single metal plate holders, film pack adapter and a leather carrying case.

Picture Size.....	3¼ x 4¼ inch
Lens.....	Zeiss Tessar <i>f</i> :4.5 of 5¼ inch focal length
Shutter.....	Compur with cable and finger release
Speeds.....	1 to 1/200 sec. Time and Bulb
Bellows.....	Black leather, 10 inch extension
Camera Size.....	2 x 4½ x 5¾ inch. Weight 33 ozs.



Supplementary lenses Distar and Proxar may be used on this model. See page 49.

Leiss Ikon Cameras



Orix
(Formerly "Trix")

For Plates and Film Packs 4 x 6" (10 x 15 cm.)

THE Orix, formerly known as Trix, has won an enviable reputation for itself, having been adopted by many of the leading dailies as the most satisfactory camera for this very difficult branch of photography. In order to withstand such hard daily use, in any season and any weather, it must be solidly constructed.

Zeiss Ikon Cameras

Press work requires a camera that can be readily concealed about the person, yet producing pictures large enough for newspaper reproduction. It must have a perfect lens both for detail and extreme speed, for the press-photographer cannot choose his light and must be equipped to make pictures under the most trying light conditions. The operation of the camera must be simple, for in many instances but a moment of time is available to make ready and take the picture. The camera must also be suitable for flashlight work, holding the camera and operating the flash at the same time. The Orix meets all of these conditions.

The camera has a bellows capacity of fourteen inches, vertical and horizontal front movements of $1\frac{1}{8}$ and $1\frac{1}{4}$ inches respectively, Iconometer as well as a large brilliant view finder, three tripod sockets, hooded ground glass back, and rack and pinion focusing device.

The plate holders are of sheet steel, strong and accurately made. Three of the Orix holders are of about the same bulk as one double wooden holder of corresponding size.

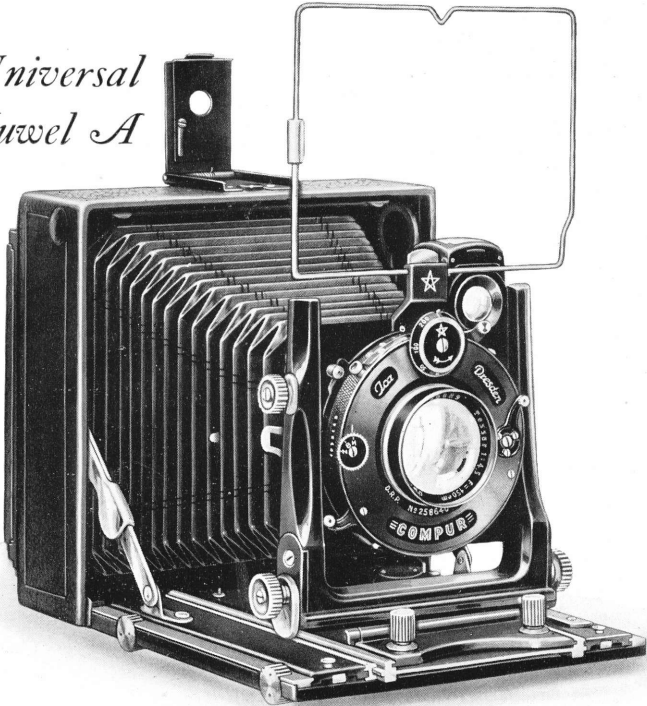
With the camera are included a leather carrying case, three plate holders and film pack adapter.

A special press outfit consists of camera, 12 plate holders, 2 cable releases in strong leather carrying case.

Picture Size.....	4 x 6 inch (10 x 15 cm.)
Lens.....	Zeiss Tessar $f:4.5$ of $6\frac{1}{2}$ inch focal length
Shutter.....	Compur with cable and finger release
Speeds.....	1 to $1/200$ sec. Time and Bulb
Bellows.....	Black leather, 14 inch extension
Camera Size.....	$2\frac{1}{4}$ x $5\frac{1}{2}$ x $7\frac{3}{4}$ inch. Weight: $47\frac{1}{2}$ ozs.

Supplementary lenses Distar and Proxar may be used on this model. See page 49.

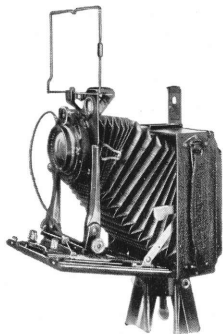


*Leiss Ikon Cameras**Universal
Juwel A*

For Plates and Film Packs $3\frac{1}{2} \times 4\frac{3}{4}$ " (9 x 12 cm.)

PORTRAITURE, landscapes, architecture, telephotography, are a few branches of photography which actually become a pleasure when attempted with the Universal Juwel A. Note the extreme rise and the tilting feature of the front, the swing back and the sixteen-inch bellows. The vertical and horizontal front movements are operated by micrometer screw adjustment. Two rack and pinion focusing screws are provided so that the front may be extended by the front thumb screw and the back by the rear thumb screw. The construction is entirely of metal.

Leiss Ikon Cameras



The clamp-on, double plate holders, as well as film pack adapter are beautifully finished in ebonized hardwood, reinforced with aluminum, and will accommodate plates or film packs 9×12 cm. or $3\frac{1}{2} \times 4\frac{3}{4}$ inch. The back of the camera can be revolved, enabling horizontal and vertical exposures to be made without the necessity of turning the entire camera.

The bellows capacity is ample for the use of Zeiss Distar Lenses.

The camera is especially well adapted for wide-angle work with a Carl Zeiss wide-angle Protar of $3\frac{3}{8}$ inch focal length.

If a wide-angle lens is used, the bed may be lowered and the front set parallel with the back.

A leather carrying case, three double wooden plate holders, a film pack adapter, and cable shutter release are included with each Universal Jewel A.

Picture Size: $3\frac{1}{2} \times 4\frac{3}{4}$ inch (9 x 12 cm.)

Lens: Zeiss Tessar $f:4.5$, 6 or $6\frac{1}{2}$ inch focal length

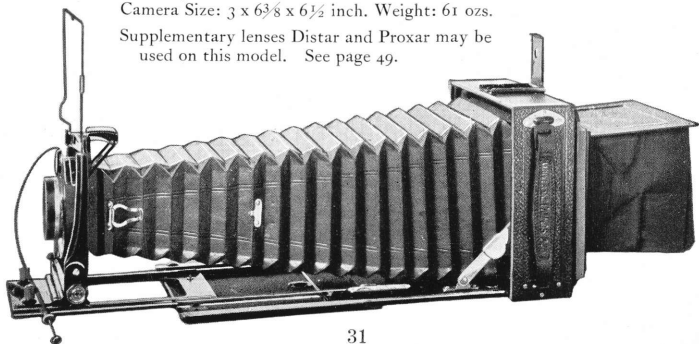
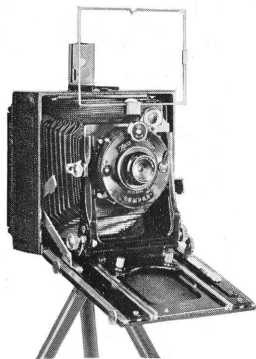
Shutter: Compur with cable and finger release

Speeds: 1 to $1/200$ sec. Time and Bulb

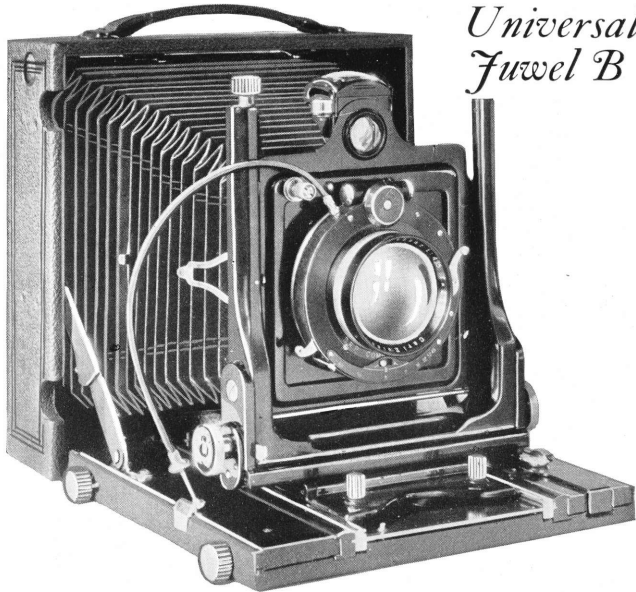
Bellows: Black leather, 16 inch extension

Camera Size: $3 \times 6\frac{3}{8} \times 6\frac{1}{2}$ inch. Weight: 61 ozs.

Supplementary lenses Distar and Proxar may be used on this model. See page 49.



Leiss Ikon Cameras



*Universal
Juwel B*

For Plates and Film Pack 5 x 7".

THE aristocrat of all cameras, the Universal Juwel B, makes its appeal to the whole-hearted, ambitious photographer. It may well be termed "a camera of limitless possibilities".

It is a jewel in appearance as well as in name, microscopically accurate in adjustments, structurally correct, and of perfect design.

The construction of the Universal Juwel B is of ebonized hardwood, metal reinforced. The plate holder or film pack adapter is locked in position by the pressure of a button, an exclusive and valuable feature. The large focusing hood eliminates the necessity of a focusing cloth.

Of utmost importance is the Carl Zeiss Tessar Lens, its large working aperture of $f:4.5$ being suitable for interior

Leiss Ikon Cameras

portraiture, autochromes, exposures in poor light; in fact, wherever perfect optical correction, combined with extreme speed is required, the Tessar is unequalled.

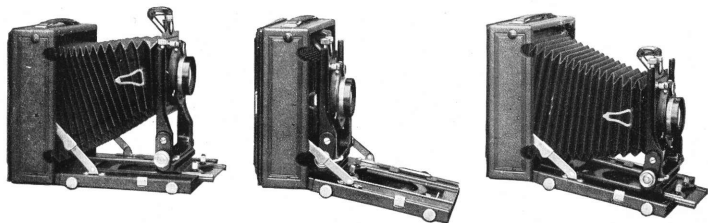
For wide-angle work with an extremely wide-angle lens, the front adjustments of the Universal Jewel B permit dropping of the camera bed, also tilting the lens panel to any angle required.

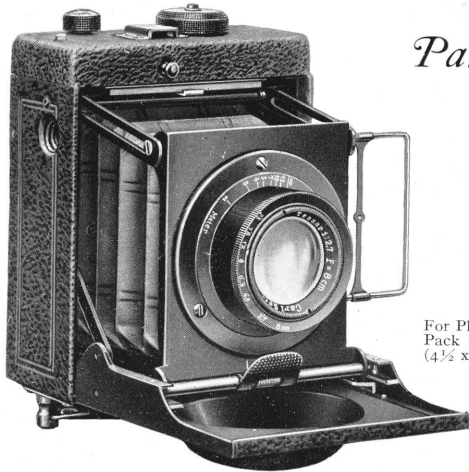
The front of the Universal Jewel B has extreme vertical and horizontal movements, operated by screw mechanism. Both the front and the revolving back of the camera have swing adjustments so that even when the camera is pointed upward at an angle the lens and plate may be set vertical and parallel with each other. These adjustments are the same as illustrated on page 31, showing the Universal Jewel A. In photographing many subjects these movements are absolutely essential to enable one to obtain the best results.

With the Universal Jewel B are included three double wooden plate holders, film pack adapter, and a leather carrying case.

Picture Size.....	5 x 7 inch
Lens.....	Zeiss Tessar $f:4.5$ of $8\frac{1}{4}$ inch focal length
Shutter.....	Compur with cable and finger release
Speeds.....	1 to 1/100 sec. Time and Bulb
Bellows.....	Black leather, 18 inch extension
Camera Size.....	$3\frac{1}{2}$ x 9 x 9 inch. Weight 8 lbs. 6 ozs.

Supplementary lenses Distar and Proxar may be used on this camera. See page 49.



*Palmos O*

For Plates and Film
Pack $1\frac{3}{4} \times 2\frac{3}{8}$ "
($4\frac{1}{2} \times 6$ cm.)

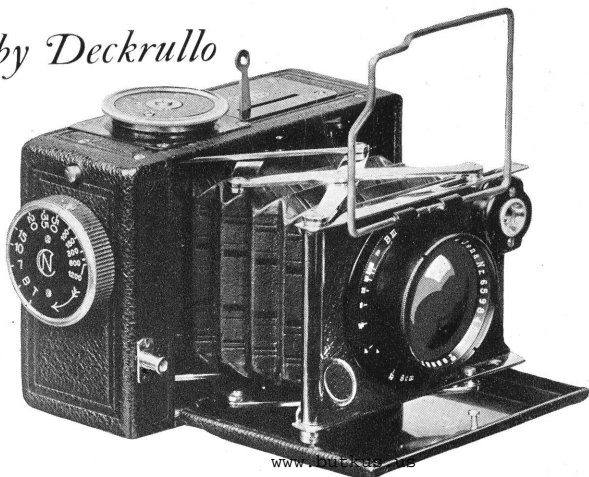
THE Palmos O is the most practical camera for its particular field of photography. It takes plates and film packs $4\frac{1}{2} \times 6$ cm. Fitted with the Zeiss Tessar $f:2.7$, it will produce pictures under the most adverse light conditions. Then there is the added efficiency of the focal plane shutter of the safety self-capping type with speeds ranging from $1/50$ to $1/1000$ second. The $3\frac{1}{8}$ inch Tessar $f:2.7$ gives sufficient depth of field so that its full aperture may be used when it would be absolutely necessary to use a relatively small diaphragm with a lens of six inch focal length. The camera is of metal construction, leather covered and has leather bellows. When closed the front of the camera protects the lens. Focusing is done by means of the focusing mount of the lens.

A hooded ground glass focusing back, two tripod sockets, Icometer finder, three metal plate holders, film pack adapter and leather carrying case are included with each camera.

Picture Size.....	$4\frac{1}{2} \times 6$ cm. ($1\frac{3}{4} \times 2\frac{3}{8}$ inch)
Lens.....	Zeiss Tessar $f:2.7$ of $3\frac{1}{8}$ inch focal length
Shutter.....	Focal Plane
Speeds.....	$1/50$ to $1/1000$ sec. and Time
Camera Size.....	$2\frac{1}{2} \times 3\frac{1}{2} \times 4\frac{1}{4}$ inch. Weight: 25 ozs.

Leiss Ikon Cameras

Baby Deckrullo

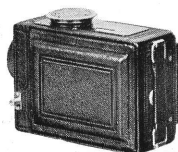


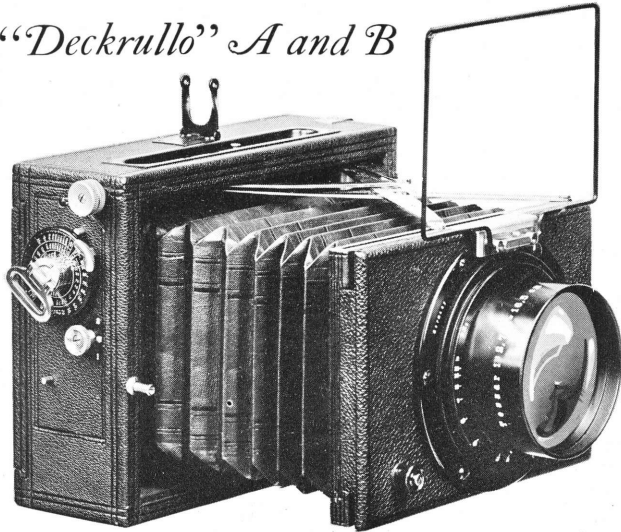
For Plates or Film Packs $1\frac{3}{4} \times 2\frac{3}{8}$ " ($4\frac{1}{2} \times 6$ cm.)

THIS convenient and compact camera, fitted with a Zeiss Tessar $f:2.7$, may be used for in- and outdoor scenes, by day and artificial light. It can be focused while the camera is closed, and is ready for instant action. The improved focal plane shutter is fitted with a gear brake, assuring accurate exposures under all conditions. Shutter speeds are set by lifting and rotating a single knob. The camera is equipped with a brilliant view finder and an Iconometer finder. Two tripod sockets are provided. Its aluminum body is covered with fine black leather.

Furnished in leather case with three metal plate holders and film pack adapter.

Picture Size... $1\frac{3}{4} \times 2\frac{3}{8}$ inch ($4\frac{1}{2} \times 6$ cm.)
Lens..... Zeiss Tessar $f:2.7$, of $\frac{3}{8}$ inch focal length
Shutter..... Focal Plane with gear brake
Speeds..... $1/7$ to $1/1200$ sec. Time and Bulb
Bellows..... Black leather
Camera Size... $2 \times 3 \times 4\frac{1}{2}$ inch. Weight: $27\frac{1}{2}$ ozs.

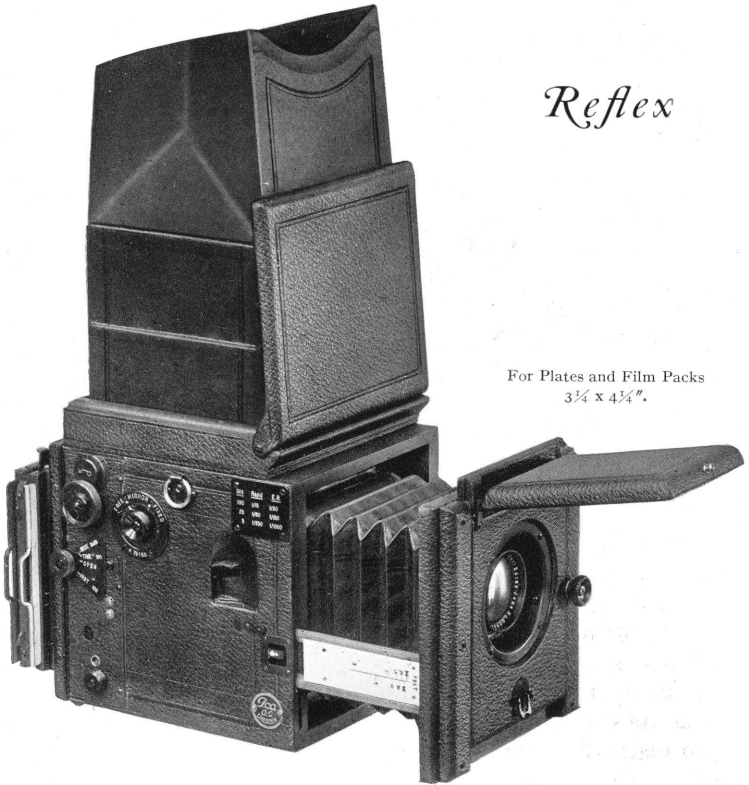


*Leiss Ikon Cameras**“Deckrullo” A and B*

For Plates: Model A, $2\frac{1}{2} \times 3\frac{1}{2}$ " ($6\frac{1}{2} \times 9$ cm.) Model B, $3\frac{1}{2} \times 4\frac{3}{4}$ " (9×12 cm.)
 For Film Packs: Model A, $2\frac{1}{4} \times 3\frac{1}{4}$ " Model B, $3\frac{1}{2} \times 4\frac{3}{4}$ " (9×12 cm.)

BOTH are universal cameras for the advanced amateur. They are instantly focused, even with the camera closed, by micrometer and scale, for distances ranging from infinity to as near as two or three feet. The Iconometer finder enables one to quickly center on moving objects. The shutter functions properly under all conditions, for contrary to others, it has no spring tension to regulate the speed but is fitted with a gear brake, permitting extremely accurate exposures from $1/10$ to $1/2800$ sec. ($1/1200$ sec. for Model A). "Time" and "Instantaneous" exposures are possible either with the hand or cable release. The cameras, made of hardwood, covered with black morocco leather, have black leather bellows and are regularly equipped with the Zeiss Tessar $f:2.7$. They may also be furnished with Zeiss Tessar $f:4.5$. The Deckrullo A and B are supplied in a leather case, including three wooden plate holders and a film pack adapter.

Leiss Ikon Cameras



Reflex

For Plates and Film Packs
3¼ x 4¼".

IN the Reflex the picture is shown right side up, exactly the same size as it will appear in the finished picture, however, being reversed right for left. The shutter can remain set while the image is being viewed on the ground glass, and the moment it appears at its best, the exposure may be made. It provides a positive means of focusing with the added comfort of working without a focusing cloth or a tripod. The shutter of the Reflex is of the focal plane type, consisting of a light-proof cloth curtain with fixed slits working on rollers, and has nine different speeds.

Zeiss Ikon Cameras

The focusing hood is large and square in shape so that the corners of the ground glass may be properly observed.

The reflecting mirror is silvered on the upper surface. In Reflex cameras having an ordinary mirror a double image is caused by the upper as well as the lower surface reflecting an image which frequently causes trouble in focusing.

The bellows capacity of the Reflex is 9 inches.

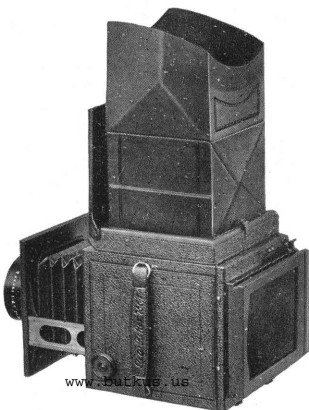
Another feature often found most useful on the Reflex is the infinity indicator. There is also a focusing scale marked in distances down to 3 feet.

When fitted with the Tessar $f:4.5$ the front has vertical adjustment, a necessity in eliminating foreground or in taking high buildings, etc.

The lenses regularly fitted to the Reflex are the Carl Zeiss Tessar $f:4.5$, the Triotar $f:3.5$, and Tessar $f:2.7$.

The back is reversible and accommodates Graflex plate holders and other Graflex accessories.

The price of the camera includes one Graflex plate holder.



Picture Size.....	$3\frac{1}{4} \times 4\frac{1}{4}$ inch						
Lens.....	<table border="0" style="font-size: 2em; vertical-align: middle;"> <tr> <td style="font-size: 1em;">{</td> <td style="font-size: 1em;">Zeiss Tessar $f:4.5$ of 6 inch focal length</td> </tr> <tr> <td style="font-size: 1em;">{</td> <td style="font-size: 1em;">Zeiss Triotar $f:3.5$ of 7 inch focal length</td> </tr> <tr> <td style="font-size: 1em;">{</td> <td style="font-size: 1em;">Zeiss Tessar $f:2.7$ of $6\frac{1}{2}$ inch focal length</td> </tr> </table>	{	Zeiss Tessar $f:4.5$ of 6 inch focal length	{	Zeiss Triotar $f:3.5$ of 7 inch focal length	{	Zeiss Tessar $f:2.7$ of $6\frac{1}{2}$ inch focal length
{	Zeiss Tessar $f:4.5$ of 6 inch focal length						
{	Zeiss Triotar $f:3.5$ of 7 inch focal length						
{	Zeiss Tessar $f:2.7$ of $6\frac{1}{2}$ inch focal length						
Shutter.....	Focal Plane type						
Speeds.....	$1/15$ to $1/1000$ sec. and Time						
Bellows.....	Black leather 9 inch extension						
Camera Size.....	$6\frac{3}{8} \times 6\frac{3}{8} \times 7\frac{1}{4}$ inch. Weight ($f:4.5$ lens) 4 lbs. 7 ozs.						

A supplementary Distar lens may be used on the Tessar $f:4.5$. See page 49.



Leiss Ikon Cameras



Miroflex Sport and Reflex camera

For Plates and Film Packs 9 x 12 cm. (3½ x 4¾")

THIS fascinating universal camera combines the advantages of the "Deckrullo" sport camera with those of a reflex camera, enabling the amateur to master every photographic contingency.

The finest material and workmanship distinguish this ingenious creation. The camera body consists of a light metal alloy casting, covered with fine black leather. It is easily manipulated free-hand or may be used on a tripod, like a conventional camera. Shutter speeds range from 1/3 to 1/2000 sec., and are set by lifting and rotating a single timing knob. The shutter speed may be changed at the last moment, even after the shutter has been set. A gear brake, entirely unaffected by cold, heat and moisture, always insures a smooth action, absolutely free from vibration. Focusing is accomplished by a focusing lens mount. In order to recheck the focusing on the ground glass, the shutter may be opened again, and it is not necessary to reset the pre-determined shutter speed for exposure. Single plate holders or a film pack adapter may be used. The rising and sliding frontboard will also accommodate a Zeiss "Tele-Tessar" f:6.3 lens.

Leiss Ikon Cameras



The "Miroflex" is fitted with bellows, and when folded is compact and convenient to carry. Pushing a button automatically unfolds the reflex hood, ready for instant action.

The "Miroflex," held by a neck strap, provides ideal operating conditions, as the object may be observed right side up and focused, up to the very moment of "shooting".

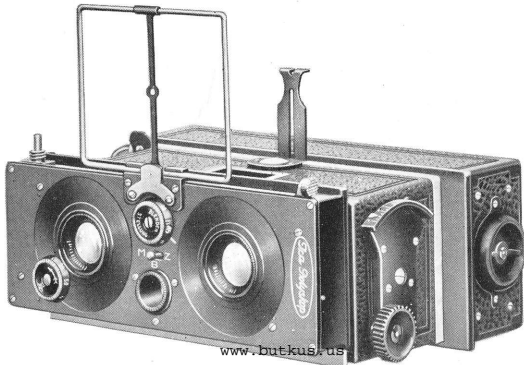
The camera equipment includes three plate holders, film pack adapter and leather carrying case.

Picture Size.....	9 x 12 cm. (3½ x 4¾ inch)
Lens.....	Zeiss Tessar <i>f</i> :4.5 of 6 inch focal length or Zeiss Tessar <i>f</i> :2.7 of 6½ inch focal length
Shutter.....	Focal Plane type with gear brake
Speeds.....	1/3 to 1/2000 sec. and Time
Camera Size (closed).....	2¾ x 5½ x 7 inch
Weight.....	With <i>f</i> :4.5 lens, 5 lbs. With <i>f</i> :2.7 lens, 7½ lbs.



Leiss Ikon Cameras

Polyscope A



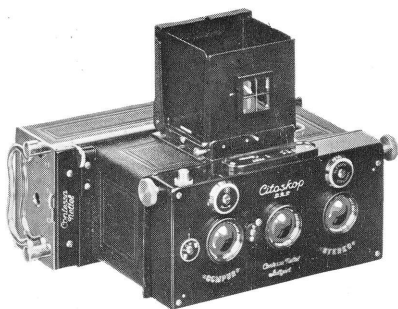
For Plates or Film Packs 45 x 107 mm.

THE Polyscope A is without question the premier stereo camera. It is constructed most accurately, of elegant appearance, and has every adjustment to secure the best stereoscopic results. This model makes the popular 45 x 107 millimeter picture. The body of the Polyscope A is of aluminum with fixed extension, a screw adjustment providing a means for fine focusing. An ample rising front is provided, the effect of its elevation being indicated in the Iconometer. A brilliant indirect finder is mounted between the lenses.

The Polyscope A is supplied with a magazine for twelve plates, in a leather case. Single metal plate holders and a film pack adapter may be had at extra cost.

Picture Size.....	45 x 107 mm
Lenses.....	Matched Zeiss Tessars $f:4.5$ of $2\frac{1}{2}$ inch focal length
Shutters.....	Compur with cable and finger release
Speeds.....	1 to $1/250$ sec. Time and Bulb
Camera Size with Plate Magazine.....	$2\frac{3}{4} \times 4\frac{1}{8} \times 6$ inch. Weight 44 ozs.
Camera Size with Single Plate Holder.....	$2\frac{3}{8} \times 2\frac{3}{4} \times 5\frac{1}{4}$ inch. Weight 24 ozs.

Citoskop



For Plates or Film Packs 45 x 107 mm.

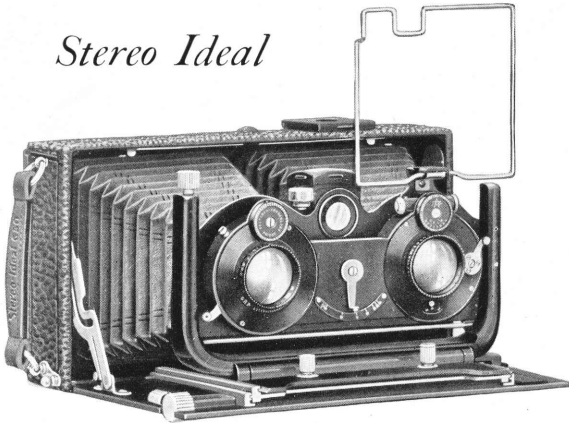
THE "Citoskop" is a stereo reflex camera. With the Zeiss Finder Triplet, the subject is shown full size, right side up, and can be watched during exposure, thus providing a positive means of focusing. Eye-level pictures may be taken with a Newton finder and focusing scale. Stereo enthusiasts will find in this precision instrument the acme of all stereo cameras. The camera and magazine for 12 plates are furnished in a black leather carrying case. Single metal plate holders and a film pack adapter may be had at extra cost.

Picture Size.....45 x 107 mm.
Lenses.....Two matched Zeiss Tessars $f:4.5$ of $2\frac{1}{2}$ inch focal length
Shutters.....Stereo Compur with cable and finger release
Speeds.....1 to $1/250$ sec. Time and Bulb
Camera Size with Plate Magazine. $2\frac{3}{4} \times 4\frac{1}{4} \times 5\frac{3}{4}$ inch
Weight with Plate Magazine.....43 ozs.



Leiss Ikon Cameras

Stereo Ideal



For Plates 6 x 13 cm. (2 3/8 x 5")

THE Stereo Ideal is an all-metal construction folding camera. The matched Tessars in Stereo Compur Shutter are supported by a heavy U-form standard, insuring absolute rigidity. The camera has rack and pinion focusing adjustment, and the objectives may be raised or lowered by means of a built-in micrometer screw movement. The back is fitted with a hooded ground glass for accurate focusing. The plate holders or film pack adapter are of the clamp-on style, so that plates may be changed easily and quickly without moving the camera. A plate magazine, holding twelve plates or eight color plates, may be supplied. This camera is particularly well adapted for color photography. The Stereo Ideal is covered with fine, black leather and supplied in a leather carrying case, with three plate holders and film pack adapter.

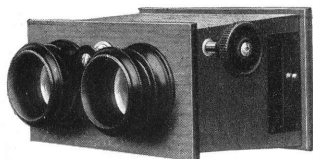
Picture Size	6 x 13 cm. (2 3/8 x 5 inch)
Lenses	Matched Zeiss Tessars f:4.5 of 3 1/2 inch focal length
Shutters	Compur with cable and finger release
Speeds	1 to 1/150 sec., Time and Bulb
Bellows	Black leather
Camera Size	1 3/4 x 3 3/4 x 6 1/4 inch
Weight	44 ozs.

Leiss Ikon Cameras



Transposing

STEREO PRINTING FRAMES



STEREOSCOPES

of mahogany for transparencies

In two sizes: Model A for 45x107 mm. Model B for 6x13 cm.



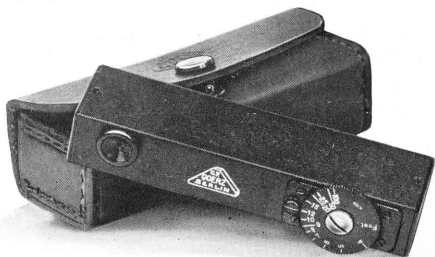
"DIAPHOT"

EXPOSURE Meter to determine quickly the correct exposure or diaphragm opening for any subject, in almost any light. No calculating to do, no complicated table to use and no paper to expose! The diaphragm markings are in both U. S. and f systems, $f:4.5$ and smaller. It is about the size of a small thin

watch and beautifully made. Supplied in a neat leather purse.

DISTANCE METER

WITH this pocket size Distance Meter the photographer can instantly measure distances from 4 to 100 feet. Looking through the eye-piece, the circular distance scale is rotated until the subject appears natural. If the distance is incorrectly set the image seen through the meter appears in two parts.



Leiss Ikon Cameras



Miraphot

WITH the "Miraphot" Automatic Enlarger it is as simple to make enlargements as contact prints. Enlargements of 1.3 to 3.5 diameters may be made, the maximum size being 11 x 14 inches. The largest negative from which enlargements can be made is 9 x 12 cm. ($3\frac{1}{2}$ x $4\frac{3}{4}$ inches). The Miraphot is always in focus, so it is only necessary to move the sliding handle up or down until the picture appears in the desired size. Turning a knob places a red glass

over the lens so that the sensitized paper may remain in place, while adjusting for the required size.

The construction of the Miraphot is entirely of metal, attractively finished in black and nickel. It can be connected to any light socket.

The lamp housing consists of a specially designed parabolic reflector which produces even and brilliant illumination.

Enlargements made with a Miraphot from small negatives will equal if not surpass prints obtained from larger negatives, thus allowing a substantial saving in the cost of films or plates. The Miraphot is supplied with electric bulb, cable, socket and switch.





CARL ZEISS PHOTO LENSES

for every photographic purpose are unsurpassed in definition and covering power

TESSARS $f:4.5-6.3-2.7-3.5-5-10-12.5$.

DISTAR, PROXAR

Supplementary lenses for TESSAR.

TELE-TESSARS $f:6.3$.

DOUBLE PROTARS $f:7-6.3-7.7$.

PROTARS $f:18$ PROTAR LENSES $f:12.5$.

Sets of PROTARS.

MAGNAR TELE OBJECTIVE and TELEPHOTO combinations.

TRIOTARS $f:3-3.5$ and TRIPLETS $f:4.8-5$.

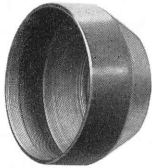
APOCHROMAT TESSAR and PLANAR PROCESS LENSES and accessories.

YELLOW FILTERS. DUCAR FILTERS for color photography.

Special equipment for amateur movie cameras.

Ask for Zeiss photographic lens catalog.

Pamphlet "How Zeiss lenses are made" free on request.



Sun Shade



Filter

Distar
or
ProxarZeiss Tessar in Compur
Shutter

*D*ISTAR and Proxar are supplementary lenses. Distars increase, Proxars shorten the focal length of the camera lens. On page two are shown reproductions of photographs made with the Carl Zeiss Tessar $f:4.5$ of $5\frac{1}{4}$ inch focus on an Ideal B Camera, one of them with a Distar added and another with a Proxar added to the Tessar. This illustrates the advantage a camera owner has in being able to change the focus of his lens, resulting with Distar in a telephoto, with Proxar in a wide-angle lens combination, by a very simple and inexpensive method.

Zeiss Yellow Filters, made of one piece of special Jena yellow glass, render the intensity values of colors as perceived by the eye. They are supplied in two densities, light requiring 5x and dark requiring 10x exposure.

Zeiss Sun Shades to fit the camera lenses.

Zeiss Ducar Filters for color photography (Autochrome and Agfa Plates) are compensating filters, eliminating the necessity of special scales, focusing screens, etc.

Carl Zeiss Photo Lens Catalog on request.



THE following list of double extension* Zeiss Ikon Cameras, fitted with Carl Zeiss Tessar Lenses $f:4.5$, shows which Zeiss Distar or Proxar Lenses may be used. To order Distar or Proxar Lenses use designations as given below.

Camera	Distar		Proxar	
	Combined focal length, inches	Designation	Combined focal length, inches	Designation
Icarette L 4 1/8 inch	5 1/8 6	2/Co* 3/Co*	3 1/2	2/Co*
Nixe A 5 1/4 inch	7 1/4 8 3/4	2/III 3/III	4 1/4	2/III
Nixe B 6 inch	8 10	2/IV 3/IV	4 3/4	2/IV
Ideal A 4 3/4 inch	6 1/4 7 1/2	2.5/Coa 3.5/Coa	3 3/4	2/Coa
Ideal B 5 1/4 inch	7 1/4 8 3/4	2/III 3/III	4 1/4	2/III
	9 3/4	3.5/III		
6 inch	8 10	2/IV 3/IV	4 3/4	2/IV
Trona 5 1/4 inch	7 1/4 8 3/4	2/III 3/III	4 1/4	2/III
Orix (Trix) 6 1/2 inch	8 1/2 11 12 1/2	1.5/VI 2.5/VI 3/VI	5 1/2	1.5/VI
Universal Juwel A 6 inch	8 10 11 1/4	2/IV 3/IV 3.5/IV	4 3/4	2/IV
	8 1/2	1.5/VI		
6 1/2 inch	11 12 1/2	2.5/VI 3/VI	5 1/2	1.5/VI
Universal Juwel B 8 1/4 inch	11 1/4 13 1/4 16	1.5/VII 2/VII 2.5/VII	7	1/VII
Reflex Tessar $f:4.5$ 6 inch	8	2/IV	Proxar cannot be used for infinity	

* To use Distars and Proxars on single extension cameras or cameras not equipped with ground glass, would require the fitting of a secondary special infinity scale on the camera bed.



MAGNIFIERS

Aplanatic Focusing Magnifiers 6x, 8x or 10x



With sliding sleeve
\$6

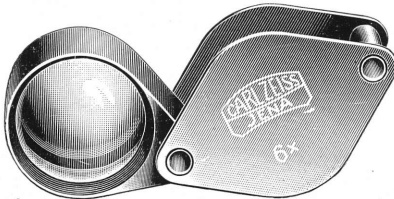


With clamping collar
\$10



With tripod
\$7.50

Aplanatic Folding Magnifiers



2½x . . . \$5.00
6x 6.50
8x 6.50
10x 6.50

Double lens folding, magnifications: 3x, 4x and 7x—\$11

Picture Viewers

of 7, 9, 11, 15 cm. focal length each, magnifying 3.5x, 2.7x, 2.3x, 1.7x, respectively, to view photographs in their proper perspective and natural relief. Large field of view.



\$5.00

Ask for complete catalog on Zeiss Magnifiers.

Carl Zeiss Prism Binoculars

AMONG the more than twenty popular models of Zeiss binoculars there is one for every purpose.

As a companion on your travels, for sports, on hunting trips, the Zeiss will bring out distant scenes in remarkable detail.

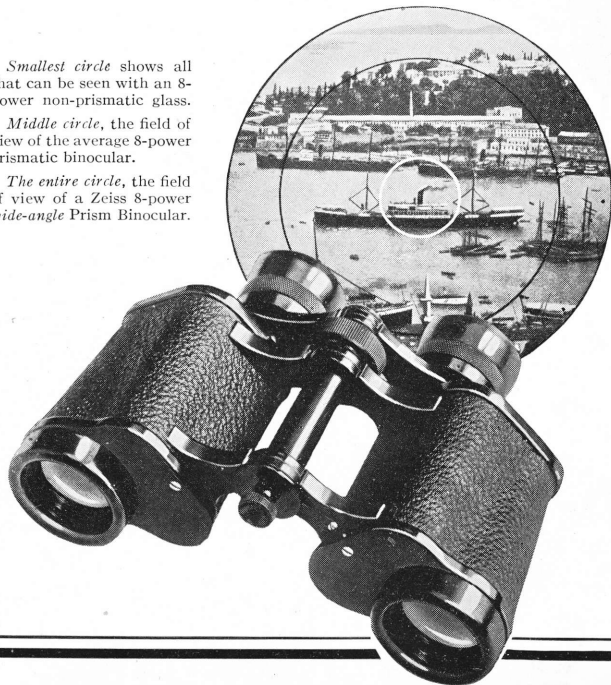
For nature lovers the Zeiss binocular can easily be converted into a magnifier by adding an objective front lens.

Binocular booklet describing all models sent on request.

Smallest circle shows all that can be seen with an 8-power non-prismatic glass.

Middle circle, the field of view of the average 8-power prismatic binocular.

The entire circle, the field of view of a Zeiss 8-power wide-angle Prism Binocular.





FABRICATION AERIAL SURVEYS INC. N.Y.C.

TAKEN WITH ZEISS TESSAR 4.5 $f=12''$ FOCAL LENGTH

COLONEL LINDBERGH'S WELCOME IN NEW YORK