



This manual is for reference and historical purposes, all rights reserved.

This page is copyright© by M. Butkus, NJ.

This page may not be sold or distributed without the expressed permission of the producer

I have no connection with any camera company

On-line camera manual library

This is the full text and images from the manual. This may take 3 full minutes for the PDF file to download.

If you find this manual useful, how about a donation of \$3 to: M. Butkus, 29 Lake Ave., High Bridge, NJ 08829-1701 and send your e-mail address so I can thank you. Most other places would charge you \$7.50 for a electronic copy or \$18.00 for a hard to read Xerox copy.

This will allow me to continue to buy new manuals and pay their shipping costs.

It'll make you feel better, won't it?

**If you use Pay Pal or wish to use your credit card,
click on the secure site on my main page.**

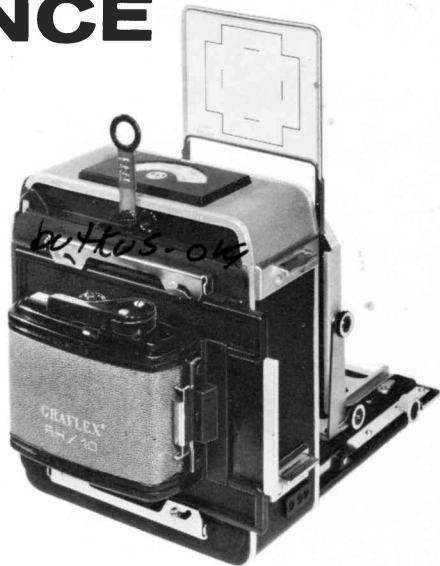
GRAFLEX[®]

RAPID-VANCE

ROLL FILM HOLDER

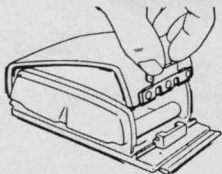
**FOR
120
ROLL
FILM**

Instructions



TO LOAD THE HOLDER :

FIG. 1



STEP 1 - Place the holder face down dark slide to the right. Squeeze the release latches together and lift to open the cover (Fig. 1). Don't try to lift by the sides as the sides are part of the roll holder carriage and not part of the cover. Before loading, you may find a looseness between the carriage and outer frame. This looseness provides clearance for the film and its paper backing.

STEP 2 - Load the full spool into the left hand compartment with the paper set to unwind counter clockwise with the black side facing outward (Fig. 2 and 4). Tip the edge of the spool into the cavity in the lower side of the roll holder carriage and press it downward against the spring as far as possible until the spool snaps into position (Fig. 2).



STEP 3 - Hold the lever "A" (Fig. No. 3) to the left and actuate the advance lever until the last number (8, 10 or 12) on the exposure counter passes the index mark (white line) and the counter no longer turns. Unwind enough of the protective paper covering the film to pass around the front of the carriage into the take-up spool on the right. Thread the tab end of the paper into the wider slot of the take-up spool and actuate the advance lever approximately 1/2 stroke to make a complete turn of the spool. Check to make sure that the paper is winding evenly between the spool flanges.



FIG. 2

Continue actuation of the advance lever until the marker on the backing of the film is opposite the arrow on the inside of film carriage (Fig. 4).

STEP 4 - Turn the exposure counter in the direction of the arrow toward "S" until the counter clicks into place and cannot be turned further. If it is necessary to anchor the paper backing of the film more securely onto the take-up spool before cover is closed, actuate the advance lever to rotate the take-up spool but not beyond one full turn of the spool. Further advance with the cover opened might cause the film to be fogged.

STEP 5 - Insert the carriage into the holder and close cover. Actuate the advance lever. As the lever is actuated, the paper leader on the film winds onto the take-up spool. When the No. 1 exposure position is reached, the advance lever will lock and the exposure counter (Fig. 3) will be indexed to 1, indicating the film is in position ready for the first exposure.

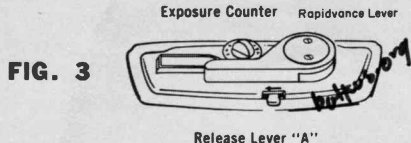
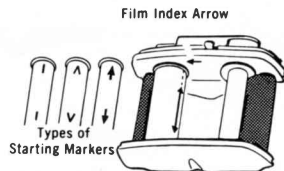


FIG. 3

FIG. 4



In this position the end of the film strip is bent around the idler in a direction opposite its normal curl. This may introduce strain on the adhesive strip which holds the film to the paper backing and under unfavorably humid conditions, the adhesive strip may loosen.

To avoid this possibility, do not advance the film to the first exposure position until the first exposure can be made and the film then wound to the No. 2 exposure position.

STEP 6 - The advance lever locks after each film advancement. To bring the film into position for the next picture after an exposure has been made, move the release lever "A" (Fig. 3) to the left (in the direction of the arrow) and release. Actuate the advance lever a full stroke to advance the film. Continue this sequence until all exposures have been made. After the last exposure, move the release lever "A" to the left as usual.

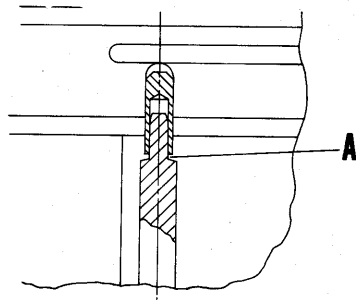
The advance lever can then be operated freely permitting the roll to be wound completely onto the take-up spool. After removing the full spool from the right side of the carriage and wrapping to protect the exposed film, switch the empty spool from the left chamber into the take-up chamber. The carriage is ready for reloading.

NOTE: For operator convenience, the roll holder carriage may be positioned in the holder with the advance lever at the top or the bottom of the holder for either right or left hand operation. (See illustration).

ATTACHING ROLL FILM HOLDER TO CAMERA: The RAPID-VANCE Roll Film Holders can be used with Graflok® and Graphic® Backs.

To fit to the Graflok® Back, remove the focusing panel frame by simultaneously depressing the knurled finger pads and sliding the panel to the right. Fit the roll holder to the back of the camera and lock in place with the upper and lower slide locks.

Use of the RAPID-VANCE Roll Film Holder on a camera equipped with a Graphic® Back requires the use of a Spring Kit. Attach the RAPID-VANCE Roll Film Holder in accordance with the instructions accompanying the kit.



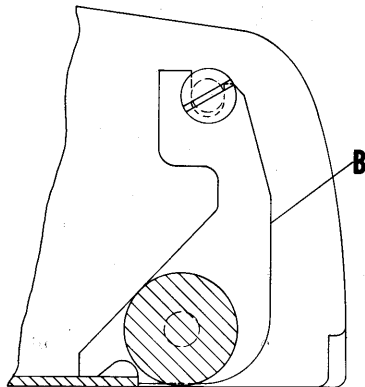
CARE OF YOUR HOLDER

This holder has been carefully designed to provide positive film flatness and film transport. Proper care will keep it operating "like new" for many years.

Before loading each roll of film carefully remove all dust and dirt, especially from the film flatteners and carriage. Check to make sure the film flattener rollers are turning freely - a sticky roller may cause film scratches.

Every six months or after shooting 50 rolls of film, whichever occurs first, lubricate the sleeves (A) at each end of both film flattener rollers (see inset). Use only Molykote Type Z, Graflex part no. 39484P2. Make a mixture of Molykote and alcohol and apply one drop to each sleeve. Turn each roller, working the lubricant deep into the sleeves. When the alcohol carrier has evaporated, carefully wipe any excess Molykote from the exposed surfaces. DO NOT USE OIL AS A LUBRICANT.

Check the guide plates (B). Both feet should be against the guide plate as shown. (See inset). Make sure the guide plate screws and the retaining screws on the advance lever are tight.



MASK SELECTION CHART
-for various film sizes (not camera sizes)-

MASK PART NUMBER	MASK CATALOG NUMBER	2-1/4 x 2-1/4 PICTURE SIZE	2-1/4 x 2-3/4 PICTURE SIZE	2-1/4 x 3-1/4 PICTURE SIZE	3-1/4 x 4-1/4 PICTURE SIZE	4 x 5 PICTURE SIZE
FOCAL LENGTH OF LENSES IN MILLIMETERS						
30715P4	9105-4		70 - 84	78 - 82	114 - 121	127 - 149
30715P3	9105-3		86 - 90	83 - 98	122 - 133	150 - 162
30715P2	9105-2		92 - 101	100 - 114	135 - 152	164 - 168
30715P9	9105-9		103 - 125	116 - 127	154 - 178	170 - 216
30715P10	9105-10		127 - 138	129 - 152	179 - 203	217 - 241
30715P11	9105-11		140 - 162	154 - 191	205 - 216	243 - 267
30715P8	9105-8		164 - 191	192 - 197	217 - 305	268 - 343
30715P7	9105-7		192 - 227	198 - 241	307 - 352	344 - 381
30715P6	9105-6		229 - 267	243 - 302	354 - 406	383 - 429
30715P5	9105-5		268 - 305	303 - 330	408 - 508	431 - 508
30715P12	9105-12	100 - 114				
30715P13	9105-13	243 - 302				
30715P14	9105-14	116 - 127				
30715P15	9105-15	129 - 152				
30715P17	9105-17	154 - 191				
30715P20	9105-20	78 - 90				
34762G2	3060 W.A. Adapter		47 - 69	47 - 75		82 - 98

HOME OFFICE:

3750 Monroe Avenue
Rochester, New York 14603

**MIDWEST SERVICE
DEPARTMENT:**

1345 Diversey Parkway
Chicago, Illinois 60614

**WESTERN
DIVISION:**

800 North Cole Avenue
Hollywood, California 90038

**GRAFLEX OF CANADA
LIMITED:**

47 Simcoe Street
Toronto 1, Ontario, Canada

GRAFLEX

**GP GENERAL
PRECISION**

GRAFLEX, INC. / A SUBSIDIARY OF GENERAL PRECISION EQUIPMENT CORPORATION
ROCHESTER, NEW YORK 14603