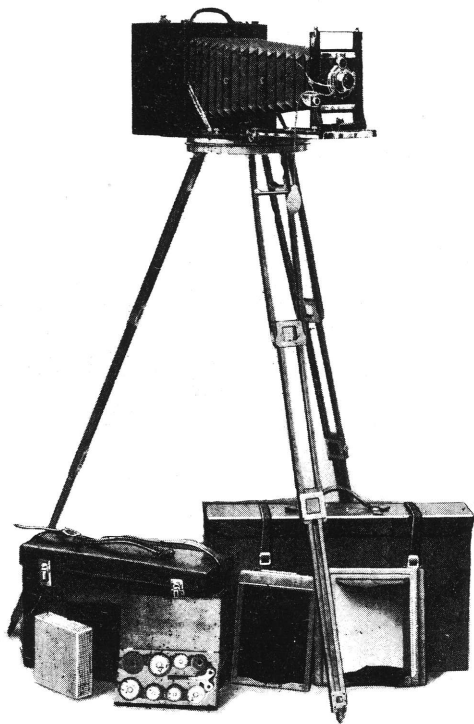


INSTRUCTIONS
for
No. 8
Cirkut Camera



Folmer Graflex Corporation
Rochester, New York

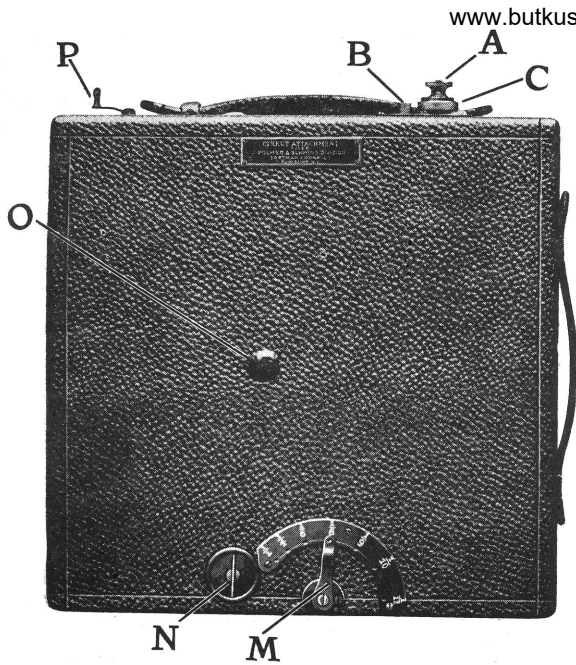
THE No. 8 CIRKUT OUTFIT



FOLMER & SCHWING DIVISION

EASTMAN KODAK CO.

Rochester, N. Y.




Cut 1

INSTRUCTIONS FOR OPERATING NO. 8 CIRKUT OUTFIT

THESE instructions cover the operation of the No. 8 Cirkut Outfit when supplied with the Graphic Rapid Rectilinear Lens regularly listed, the complete lens having a focus of 11 inches, and the rear single element a focus of 18 inches. When lenses other than above are supplied, the operation of the camera should be modified as indicated in the special letter accompanying the outfit, or supplementary instructions included herewith.

LOADING FILM BOX

Unloosen top milled head A, Cut 1, which disconnects motor from winding drum. Turn lower milled head C until white line comes opposite number 0. Turn small winding key B until number 104 appears at opening. Open film box by pressing two concealed buttons EE at the side, Cut 2. Raising the panel discloses the winding drum, spool centers and exposure slot, Cut 2. Press small locking bar F on lower spool center forward, and bring this center down far enough



This manual is for reference and historical purposes, all rights reserved.

This page is copyright© by M. Butkus, NJ.

This page may not be sold or distributed without the expressed permission of the producer

I have no connection with any camera company

On-line camera manual library

This is the full text and images from the manual. This may take 3 full minutes for the PDF file to download.

If you find this manual useful, how about a donation of \$3 to: M. Butkus, 29 Lake Ave., High Bridge, NJ 08829-1701 and send your e-mail address so I can thank you. Most other places would charge you \$7.50 for a electronic copy or \$18.00 for a hard to read Xerox copy.

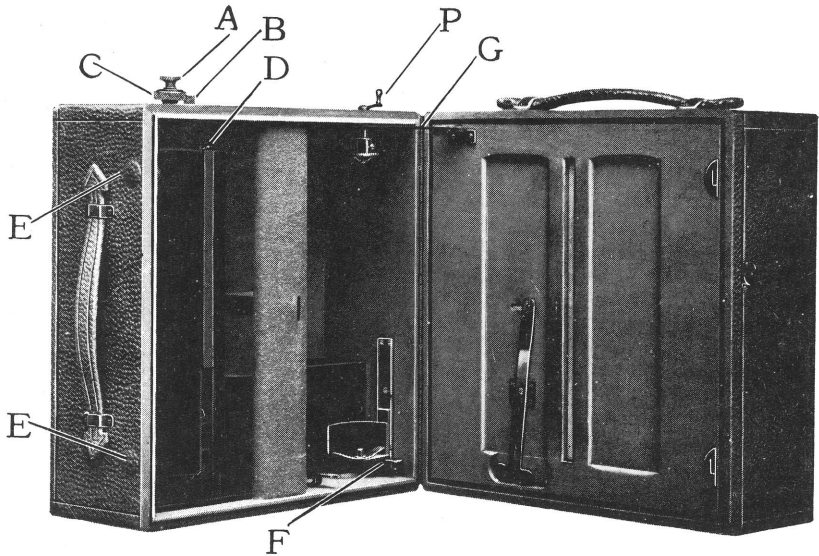
This will allow me to continue to buy new manuals and pay their shipping costs.

It'll make you feel better, won't it?

**If you use Pay Pal or wish to use your credit card,
click on the secure site on my main page.**

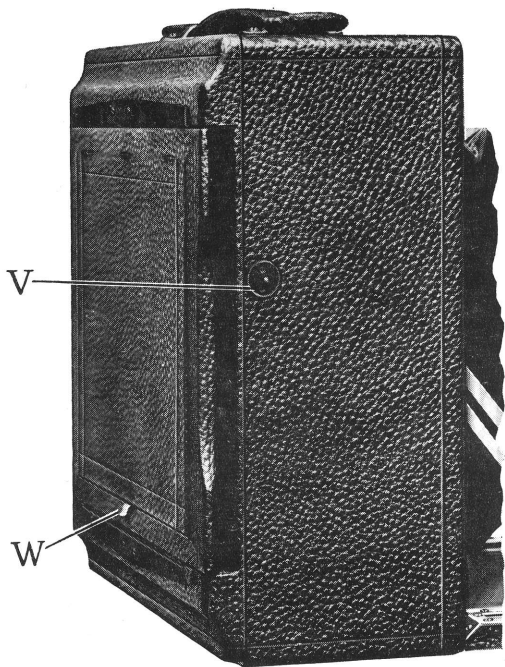
Donate: www.PayPal.me/butkus

venmo: @mike-butkus-camera Ph. 2083



Cut 2

to permit insertion of film spool, inserting lower center first. This center should then be raised until the web on top spool center falls into the slot cut in spool end. When raising the lower spool center the locking bar will fall into slot, securing the center in correct position. Release the clamp for holding black paper on drum, by pressing upward catch D and insert the end of the black paper under the clamp, which should then be pressed firmly into position allowing projecting teeth to perforate the paper. Make sure that the catch at the upper end of the drum has engaged the clamp before closing the film box. Be sure that the paper is started perfectly true and even; otherwise an unevenness of motion will be noticed, causing blurred portions in the negative. Close the cover of film box by pressing down on side arm G. Turn lower milled head C two revolutions, which will bring the white line to zero and will cause key B to turn until 0 appears at the opening. This last operation has wound the black paper from the spool to the receiving drum, and has brought the film into position for exposure. Milled head A should now be turned down firmly. This engages the motor and receiving drum.



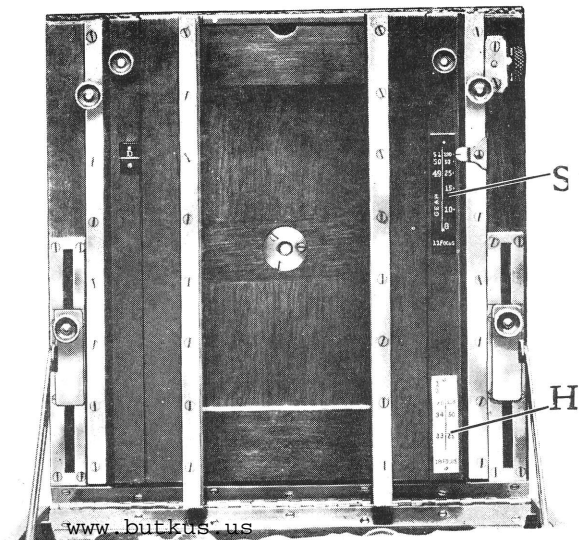
Cut 3

FOCUSING

Set the camera on tripod, making sure that it is absolutely level and being careful not to turn the tripod screw up too tight. If the tripod screw is set too firmly it frequently causes an unsteady movement, which produces vertical lines in the negative. Open the camera by pressing concealed spring at the top just forward of the handle.

***To Focus With
Doublet or
Complete Lens***

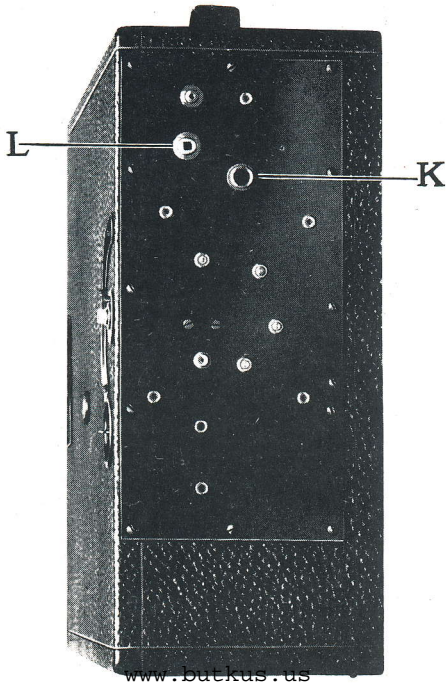
Draw out the front of the camera until small diagonal pointer on left front standard indicates white line on small scale marked D. Uncover ground glass focusing screen by pressing down on catch W, Cut 3, and focus in the usual manner. Swing the camera from side to side to be sure that everything desired in the view is included. Use the rising and falling front to secure a well-balanced negative and include the required sky and foreground. Focusing should be done with the ground glass screen in a vertical position, and revolving back in such a position that a plate holder could be inserted from the top. Select the gear wheel indicated by the pointer on the scale S, Cut 4, at the right of camera bed. If the pointer falls midway between two numbers, select the gear wheel indicated by



Cut 4

the rear number. Screw the shaft of the gear wheel selected firmly into the round opening K, Cut 5, at the bottom of film box. Wind the motor by inserting key in square opening L at bottom of film box. Be sure that the motor is wound up sufficiently tight to carry the camera the full distance. Frequently the slowing up of the motor is due to its having been insufficiently wound. Remove the ground glass back from the camera by pressing forward small catch V, Cut 3, at right of camera. Turn revolving back to the right so that the top edge falls on white line on back frame of camera. (See Cut 6). Press upward on catch U which will permit the easy removal of the ground glass back.

Place the film box in position by adjusting it to the back of camera so that the top carrying the winding key and milled head, comes diagonally across the upper right hand corner of the camera box. (See Cut 7). Turn the film box to the right, being sure it is perfectly engaged, without adjusting catch U. When the top of the film box is in line with the top of the camera it will be locked firmly into position by catch V. Turn the camera until it points to the extreme left of the subject to be photographed, and slide it forward on the tripod top until the gear wheel engages the



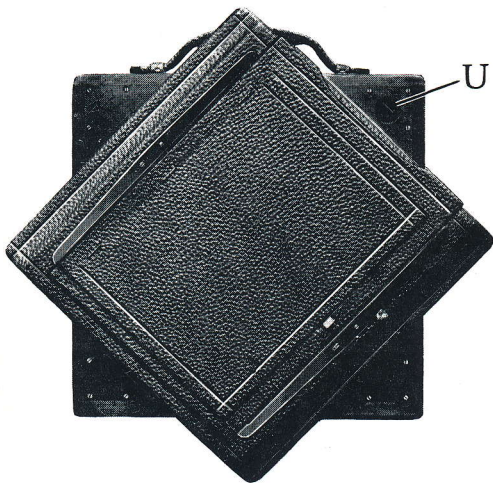
Cut 5

rack on the tripod top. Do not mesh the gears too closely; about half way is sufficient. When the gears are meshed too close the camera will vibrate, causing vertical and irregular lines in the negative.

The scale and pointer M, Cut 1, at the back of the film box indicates the speeds from 1-2 to 1-12 of a second. Estimate the exposure required and set the pointer on speed desired. See that the lens shutter is open and the diaphragm set at the required opening. Start camera by turning depressed key N on back of film box. This opens the exposure slot and starts the motor simultaneously. After the camera has revolved a sufficient distance to include the required negative, give the key another turn which closes the exposure slot and stops the motor. Press concealed button O firmly, which perforates the film at the termination of exposure showing where to cut the film apart, when more than one negative is made on the same roll of film.

**To Remove
Film**

Loosen milled head A on top of film box, and turn small crank P, Cut 1, at top of film box in direction indicated by arrow. This will rewind the film from the receiving drum and also

*Cut 6*

bring the black paper into position, when the film may be removed in daylight.

**To Focus With
Rear Single Lens
(18-inch)**

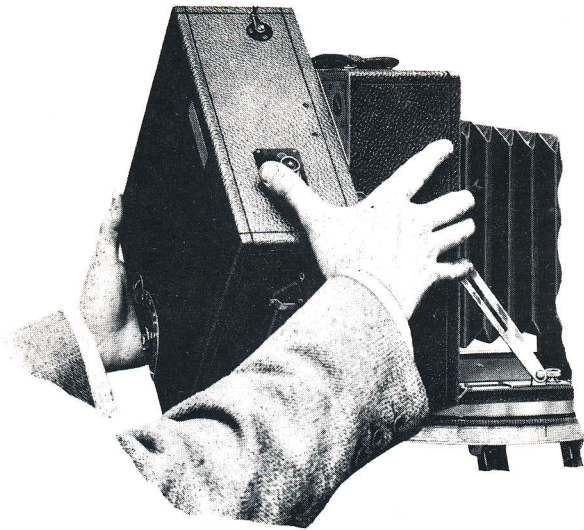
Draw front of camera out to **edge of bed**. Unscrew front cell from lens and remove it from shutter. Focus on the ground glass panel as previously indicated, and select gear wheel shown on scale H at rear of camera bed.

**To Remove
Film Box From
Camera**

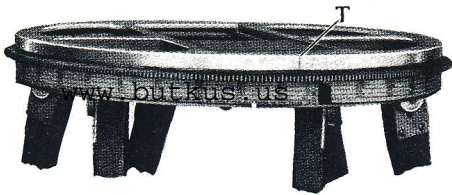
Press forward small catch V, Cut 3, at right of camera box, and turn film box to the right until the top edge falls on white line diagonally across the upper right hand corner of camera, when the film box may be readily removed without moving catch U.

**To Determine
Amount of Film
Required**

The scale encircling the tripod top indicates the amount of film required in inches for the different number of degrees that the view will embrace. When focusing the camera, the instrument should be pointed to the extreme left of the subject to be photographed and the tab—which moves the scale on tripod top—drawn around until it



Cut 7



Cut 8

comes directly under the center of the back of camera as indicated by the black line T, Cut 8, on the revolving metal platform. The camera should then be pointed to the extreme right of the subject, permitting the sliding scale to remain in position. The small black line will then indicate the number of degrees the picture would include, also the length of film in inches with either the 11 or 18-inch lens.

To determine the amount of film used by the indicator on top of Film Box, add to the number appearing in the small opening, the number indicated by the white line on milled head C. This will give the exact amount of film used for any required view.



BEFORE MAKING EXPOSURE

1. Level camera.
2. Focus.
3. Select proper gear.
4. Set governor for speed.
5. Close diaphragm.
6. Wind motor.

Then

Make exposure.

Puncture film.

Note amount of film used, and amount remaining.

WHAT NOT TO DO

Don't mesh gear wheels too closely. About half way is sufficient.

Don't have brackets binding end of spool. Spool must have a trifle play, so it will feed freely.

Don't rewind film on spool when shutter is open.

Don't use single combination of lens in front of shutter.

Don't forget to set counter at zero (0) before taking picture.

Don't tip the camera. Keep it level always.

Don't set tripod screw too tight.

CAUTION: Always see that starting key N is in an "off" position before opening film box, even though the motor has run down. If the motor is permitted to run down, and the back panel of the film box opened without first turning the key in an "off" position, the lever controlling the exposure slot will become bent when the back panel is closed.

Oil the bearings occasionally with a few drops of good sewing-machine or clock oil. Very little oil is sufficient.

FILM

When ordering Film for this instrument be sure to specify for No. 8 Cirkut Outfit, as film for No. 10 and No. 16 Cirkut Cameras cannot be used with the No. 8 Cirkut Outfit. Order listed sizes only, as films of lengths not regularly listed are spooled to order, which always involves a delay in making shipment. Films of lengths other than those listed below will be billed at the next higher regularly listed price.

FOLMER & SCHWING DIVISION,
EASTMAN KODAK Co., Rochester, N. Y.

No 8

$\frac{1}{2}$

gives

4.6 Rev
min

should be

3.2

8% off

35446

$\frac{1}{4}$

gives

6.5 Rev
min

should be

6.52

$\frac{1}{12}$

gives

12.4

Rev min

= $\frac{1}{8}$ sec

5%

Cirkut Camera Specialist
J. C. LIPARI
901 So. 69th St.
Omaha, NE 68106
(402) 558-7665