

This manual is for reference and historical purposes, all rights reserved.

**This page is copyright© by M. Butkus, NJ.**

This page may not be sold or distributed without the expressed permission of the producer

I have no connection with any camera company

On-line camera manual library

This is the full text and images from the manual. This may take 3 full minutes for the PDF file to download.

**If you find this manual useful, how about a donation of \$3 to: M. Butkus, 29 Lake Ave., High Bridge, NJ 08829-1701 and send your e-mail address so I can thank you. Most other places would charge you \$7.50 for a electronic copy or \$18.00 for a hard to read Xerox copy.**

**This will allow me to continue to buy new manuals and pay their shipping costs.**

**It'll make you feel better, won't it?**

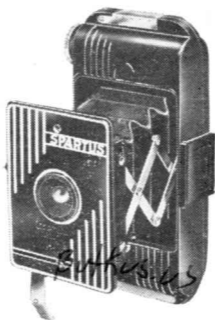
**If you use Pay Pal or wish to use your credit card,  
click on the secure site on my main page.**

# *Instructions*

FOR OPERATING THE

# **SPARTUS** **FOLDING CAMERA**

---



---

READ CAREFULLY  
FOR BEST RESULTS

## Introduction

This camera is a fine instrument, built with precision to insure consistent photographic excellence. It should always be handled carefully in accordance with the simple instructions given herein. You will be rewarded for your care with uniformly satisfactory pictures.

Before starting to take pictures, familiarize yourself thoroughly with the many features of the camera.

## Loading

Use No. 127 film. You will get 8 full size exposures  $2\frac{1}{2} \times 1\frac{5}{8}$  inches per roll. Remove the back of the camera by raising the locking device on both ends of the camera. See that the empty spool is in the top receptacle with the notched end engaged with the turning key. To do this turn the winding knob in the direction of the arrow until the narrow edge of the winding key is in the center of the opening of the spool cradle. The notch in the spool end will now slip over the key and fall into the correct position. Always turn the winding knob in the direction of the arrow—do not try to force it backward.

The roll of film may now be placed into the lower receptacle. Draw out

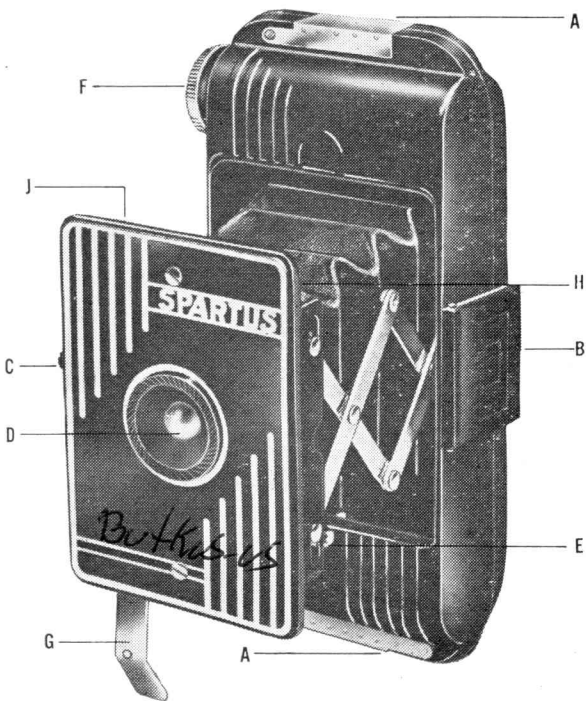


Figure 1

- |                        |                              |
|------------------------|------------------------------|
| A. Back Locks          | F. Film Winding Knob         |
| B. View Finder         | G. Leg Rest                  |
| C. Shutter Lever       | H. Instant and Time<br>Lever |
| D. Lens                | J. Aperture Lever<br>Button  |
| E. Front Cover Release |                              |

## LOADING (cont.)

just enough of the protective paper to enable you to insert the narrow end into the wide slot of the empty spool. Then turn the winding knob so that the film will begin to roll on the empty spool. Now replace the back of the camera and make sure it is securely locked.

Look into the window on the back of the camera and turn the winding knob until you see the warning hand; then turn the key very slowly until the Figure "1" appears.

After the first exposure wind the film until No. 2 appears in the center of the window. Repeat the procedure until the eighth (last) exposure has been made. After the last exposure, wind the film until no more paper appears under the window and give the knob several additional turns to make sure that all the protective paper is wound on the spool. CAUTION: Remember to wind to next number after each exposure.

## Unloading

*1307Kus-15*

To remove the exposed roll of film remove the back and then turn the winding knob until the narrow edge of the winding key is in the center of

## UNLOADING (cont.)

the opening of the spool cradle. The spool can then be lifted from the camera without forcing.

### **To Open the Camera**

Press the button directly below the lens and the front cover will automatically spring forward. After it springs out pull it forward to its limit as an assurance that it is in its proper position.

### **To Take Pictures**

Open the view finder by lifting the top with thumbnail. Now hold the rear of the view finder to your eye and center the subject. Then make the exposure by pressing down the shutter release lever. Press gently. Do not jar the camera. The exposure is made on the down stroke. Allow the release to spring up immediately after the click is heard.

### **Selecting the Proper Stop or F Value**

When the aperture lever is pushed toward the center the lens has a speed value of  $f16$ , and when pushed toward the side the aperture opening is equivalent to  $f22$ .

For most average shots use  $f16$  (large) opening. Use  $f22$  (small opening) when light conditions are unusu-

## **Selecting the Proper Stop or F Value (cont.)**

ally bright such as in direct sunlight at the seashore, snow scenes or distant landscapes.

## **To Close the Front of the Camera**

Grasp the camera with the fingers of both hands under the back of camera with the thumbs on top of the front cover. Press the front down until it clicks closed in a locked position.

## **Taking Time Exposures**

Time exposures are taken when the light is not strong enough for snap shots. A little experience and observation will show you how to gauge the length of exposure according to the amount of light.

In taking time exposures press the time lever down and place camera on a table or any sturdy piece of furniture. The leg under the front of the case should be pulled down and used as a rest. Focus on the subject and press the shutter lever gently, holding lever down for the required length of time which can be determined from the exposure tables that come with your film.

## Important

For best results, keep lens clean at all times. The lens should be cleaned only with a soft linen handkerchief or lens tissue. Do not take pictures at a distance less than 6 feet. After taking time exposures be sure to pull out "Inst and time lever" before taking instantaneous shots.

---

---

## Guarantee

This camera is guaranteed against defective workmanship and materials for a period of 1 year. If service is required, return camera to factory with this guarantee, enclosing \$1.00 for handling and postage.

*Butkus-us*

---

---

Should your Camera require any of the following repairs, it will expedite matters if you will send your remittance according to the following schedule at the same time that you mail us your Camera.

Case .....	\$2.75	Name Plate .....	\$0.50
Back .....	1.50	Lens .....	1.00
Shutter Assembly.	1.50	Bellows Assembly	2.00
View Finder ....	.75	Front Cover .....	1.00
Winding Knob...	.75	Back Lock .....	.50



## PROTECT YOUR CAMERA WITH A CUSTOM-BUILT CARRYING CASE



**\$2.00**

Regulation type convenient carrying case made of selected brown simulated leather. Has full length shoulder strap and is equipped with quick opening fastener. This is a strong durable case, sturdily reinforced for maximum wear. It is especially designed to carry and protect the Spartus Folding camera.

Available from your dealer or send check or Money Order for \$2.00 and include name of dealer.

### **THE SPENCER COMPANY**

**715 W. Lake Street**

**Chicago 6, Ill.**

**PRINTED IN U. S. A.**

**S 500**