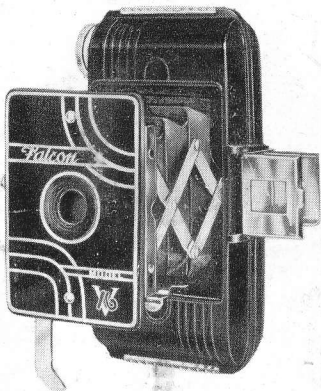


INSTRUCTIONS

FOR PICTURE-TAKING WITH

Falcon

MODEL
V-16



Use any vest pocket size film —
1⁵/₈ x 2¹/₂ in. (4 x 6¹/₂ cm.)



**READ CAREFULLY
FOR BEST RESULTS**

*W*E want you to get the fullest satisfaction from your Falcon camera. You will if you follow the simple instructions which are contained in this booklet. Please read them thoroughly before commencing to use the camera.

Clean Lens Important

It is very important that you clean the lense with a soft cloth or handkerchief, before using camera, to insure securing bright pictures.



UTILITY MANUFACTURING Co.
Incorporated

261 FIFTH AVE., NEW YORK, N. Y.

Guarantee

ooo

This Falcon V-16 Camera is unconditionally guaranteed against defective workmanship and material for a period of one year.

FOR SERVICE return camera to factory with this guarantee attached and twenty-five cents in stamps to cover handling and postage.

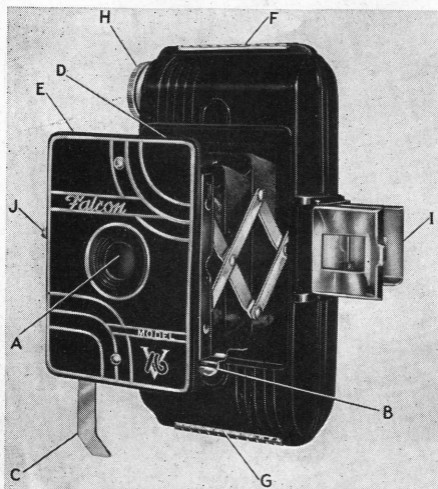
IMPORTANT: Before removing back to load or remove film, push **BOTH** top and bottom slides in the direction marked "TO OPEN".

ooo

UTILITY MANUFACTURING Co.
Incorporated

261 FIFTH AVE., NEW YORK, N. Y.

The Falcon V-16 Camera



- A — LENS
B — BUTTON FOR OPENING FRONT
C — CARRIAGE REST
D — TIME EXPOSURE LEVER
E — STOP OPENING LEVER
F — TOP LOCK
G — BOTTOM LOCK
H — WINDING KEY
I — VIEW FINDER
J — EXPOSURE LEVER
-
-

To Load Camera

ALWAYS load and unload camera in a subdued light — *never* in bright sunlight. Hold back of camera toward you and push BOTH top and bottom slides “F” and “G” in the direction marked “TO OPEN” as far as they will go without forcing and then remove back of camera.

See that the empty spool is in the TOP receptacle with the notched end in contact with the winding key.

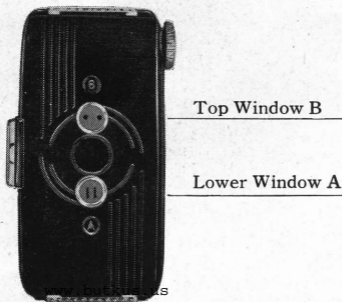
Place the film in the lower receptacle. Now break the seal with which the roll is held in place. Pull the end of the red paper toward the empty spool. Thread the end of the red paper through the broadest side of the slit in the empty spool. Now turn the key two or three times to the right so that the paper will begin to roll on to the empty spool.

Replace the back, push BOTH top and bottom slides back to original position as far as they will go in the directions marked “TO CLOSE”.

The film is now properly placed in the camera and shut. Follow directions for winding very carefully.

To Wind Film

Turn the winding key slowly, while watching the lower red window on back of camera. When the figure "1" appears in the center of the lower red window marked (A) the camera is ready for use. See illustration below.



As soon as you have taken the picture be sure to wind number 1 from (A) window to (B) window. You

are now ready to snap your second picture. Repeat process after every picture.

When number 8 appears in center of (B) window you will have taken 16 pictures.

When you have taken all the pictures keep turning the key until the complete roll of film (including the red paper which protects it) is all wound on the top roll.

Open back of camera as when loading, remove roll of film; now seal roll with piece of gummed paper which you will find on the end of the roll, so that it cannot run loose.

To Open the Camera

Simply press the button directly beneath the etched plate, with a downward motion, and the camera will automatically spring into operating position.

To bring the finder into position, simply lift the front frame, bringing it to an upright position; the sight will spring into proper position automatically.



How to Hold Camera

To Take Pictures

Hold the camera with the sight as close to the eye as possible, keeping the camera firmly against the face. Make sure the object or subject you are taking is framed within the front frame of the finder.

The camera **MUST** be held level. Should the subject be below your eye level, like a small animal, the camera should be held down level with the center of the subject.

Time Exposures

Directly behind the front door of the camera you will find a lever marked

“Time Down”. This lever should be pushed downward as far as it will go if time exposures are desired.

In taking time exposures place the camera on a firm object such as a table or chair. Never hold camera in your hand. After sighting your object press shutter release, keeping your finger on it, counting the number of seconds of exposure desired. When the required number of seconds has expired — and not until then — remove your finger from the shutter release. If no more time exposures are desired, adjust for instantaneous pictures, by pushing lever marked “Time Down” up as far as it will go.

Stop Openings

The camera has two stop openings. Use the larger one for ordinary pictures under ordinary conditions. Use the small stop opening when the sun is very bright, or for distant views.

Suitable Light Condition

In taking instantaneous pictures, be sure that the sun is directly behind your back. If sun shines directly into the lens, pictures will be fogged.

IMPORTANT


When taking VERTICAL pictures, hold the camera in position as shown in illustration below.



HOLD CAMERA FIRMLY

Hold camera steady against the face — thumb on shutter lever, index finger around bottom of front plate.

PLEASE NOTE: *Holding camera in these opposite positions is necessitated by the fact that in producing sixteen exposures from an eight exposure roll film, we produce two separate pictures on each V. P. size negative.*



This manual is for reference and historical purposes, all rights reserved.

This page is copyright© by M. Butkus, NJ.

This page may not be sold or distributed without the expressed permission of the producer
I have no connection with any camera company

On-line camera manual library

This is the full text and images from the manual. This may take 3 full minutes for the PDF file to download.

If you find this manual useful, how about a donation of \$3 to: M. Butkus, 29 Lake Ave., High Bridge, NJ 08829-1701 and send your e-mail address so I can thank you. Most other places would charge you \$7.50 for a electronic copy or \$18.00 for a hard to read Xerox copy.

This will allow me to continue to buy new manuals and pay their shipping costs.

It'll make you feel better, won't it?

**If you use Pay Pal or wish to use your credit card,
click on the secure site on my main page.**

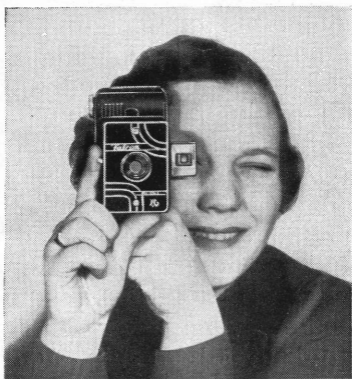
PayPal Name Lynn@butkus.org

Venmo @mike-butkus-camera Ph. 2083

www.PayPal.me/lynnbutkus

IMPORTANT

When taking HORIZONTAL pictures, hold the camera in position as shown in illustration below.



HOLD CAMERA FIRMLY

Hold camera steady against the face — index finger on shutter lever — use thumb to level camera.

PLEASE NOTE: *Holding camera in these opposite positions is necessitated by the fact that in producing sixteen exposures from an eight exposure roll film, we produce two separate pictures on each V. P. size negative.*

"LARGER" CONTACT PRINTS



Most photo finishers throughout the country are equipped with contact enlargement printers that produce approximately 3 x 4 prints from the negatives you get with this Falcon V-16 Camera.

Retail prices for these enlarged prints vary in different sections of the United States. However, in most cases they cost only slightly more than ordinary quality prints. See your dealer for further information.



UTILITY MANUFACTURING Co.
Incorporated

261 FIFTH AVE., NEW YORK, N. Y.