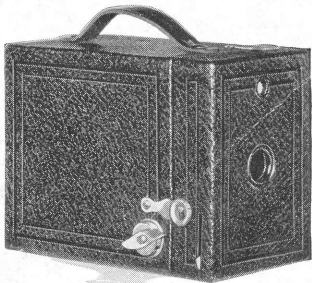


*Picture taking with the*

Rainbow  
Hawk-Eye No. 2  
Model C



EASTMAN KODAK COMPANY  
ROCHESTER, N. Y., U. S. A.

# SERVICE DEPARTMENT

## ADDITIONAL ASSISTANCE FOR MAKING BETTER PICTURES

**A**LTHOUGH we give in this manual the essential directions for using the camera it accompanies, there are amateurs who wish for further knowledge of photography.

The Service Department is at their service, *your* service.

Do not hesitate to call on us for information on any photographic subject.

*We are at your service, write to us—  
there is no charge, no obligation.*

Address all Communications

SERVICE DEPARTMENT  
EASTMAN KODAK COMPANY  
ROCHESTER, N. Y.

# "KODAKERY"

*A monthly magazine that teaches how to make better pictures, will be sent FREE OF CHARGE to anyone who obtains one of these amateur cameras, if this blank is filled out and sent to us within 30 days from the date the camera was obtained.*

**EASTMAN KODAK COMPANY.**

**TO THE EASTMAN KODAK COMPANY,  
ROCHESTER, NEW YORK:**

*Accepting your offer, please put my name on the mailing list for "KODAKERY" (with the understanding that there is to be no cost to me), I having obtained a*

.....  
(Name of Camera)

from .....

on .....

(Date)

**Print your name and address plainly:**

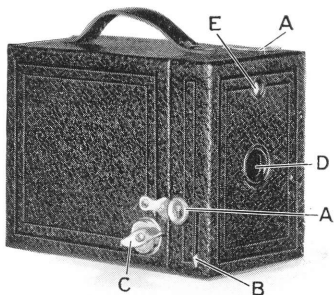
.....  
.....  
.....

**NOTE—KODAKERY** will be sent for six months on this offer. A post card will be enclosed with the fifth copy, if this post card is filled out and returned to us it will entitle you to an additional six months, free of charge. After that the subscription price will be sixty cents for one year or one dollar for two years, but you are under no obligation to renew.—E. K. Co.

*Picture taking with the*  
**Rainbow**  
**Hawk-Eye No. 2**  
**Model C**

*Published by*  
**EASTMAN KODAK COMPANY**  
**ROCHESTER, N. Y., U. S. A.**

## THE CAMERA




AA—Catches for locking camera

B—Exposure Lever

C—Winding Key

D—Lens Opening

E—Finder



This manual is for reference and historical purposes, all rights reserved.

**This page is copyright© by M. Butkus, NJ.**

This page may not be sold or distributed without the expressed permission of the producer  
I have no connection with any camera company

On-line camera manual library

This is the full text and images from the manual. This may take 3 full minutes for the PDF file to download.

**If you find this manual useful, how about a donation of \$3 to: M. Butkus, 29 Lake Ave., High Bridge, NJ 08829-1701 and send your e-mail address so I can thank you. Most other places would charge you \$7.50 for a electronic copy or \$18.00 for a hard to read Xerox copy.**

**This will allow me to continue to buy new manuals and pay their shipping costs.**

**It'll make you feel better, won't it?**

**If you use Pay Pal or wish to use your credit card,  
click on the secure site on my main page.**

PayPal Name Lynn@butkus.org

Venmo @mike-butkus-camera Ph. 2083

[www.PayPal.me/lynnbutkus](http://www.PayPal.me/lynnbutkus)

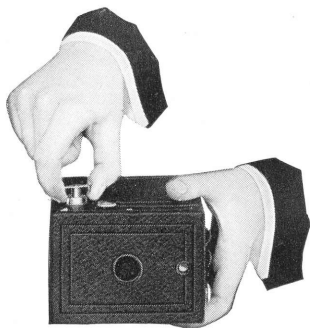
## IMPORTANT

**B**EFORE taking any pictures with your camera, and before loading it with film, read these instructions carefully.

While loading and unloading, be very careful to keep the protective paper wound tightly around the film to prevent light striking it. The camera can be loaded or unloaded in daylight. This should be done in a subdued light, *not* in direct sunlight.

### TO LOAD

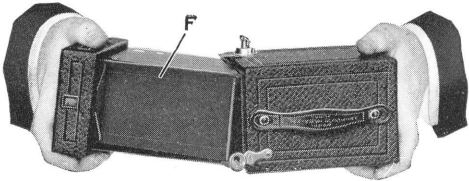
Use film number **120** for the Rainbow Hawk-Eye No. 2, Model C.



Draw out the winding key as far as it will come, turning it slightly.

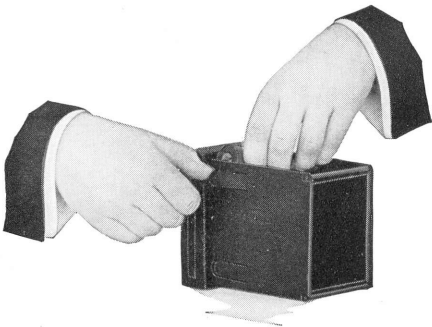
Push over the two catches AA, see illustration on page 2.

Remove the roll holder F.



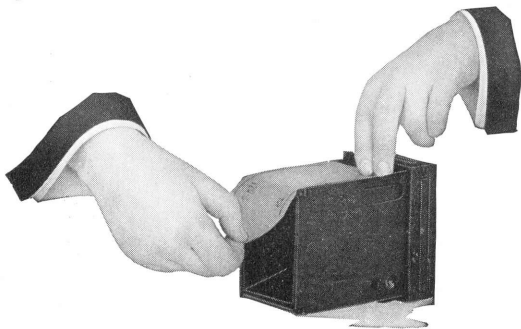
There is an empty spool in the recess on the winding side of the roll holder; this is to be used as the reel.

The winding side may always be distinguished by the round opening in the roll holder, directly behind the exposure lever.



Insert the spool of film in the recess opposite the winding side, drawing out one of the spring grips just enough to permit the spool to drop into place. Fit the spool pins into the holes at each end of the spool.

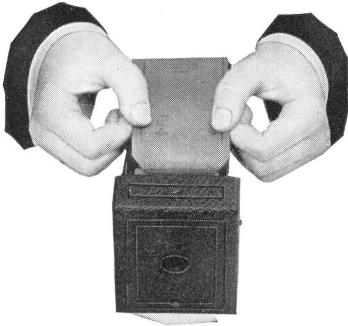
**Important:** The word "TOP" which is printed on the protective paper near the top of the spool must be next to the side of the roll holder, which has the round opening through which the key is inserted in the reel. If the spool of film is inserted the wrong way the protective paper will come between the lens and the film and no pictures could be made.



Remove the band that holds the end of the protective paper, and pass

the paper *over the rollers* and across the opening in the back of the roll holder.

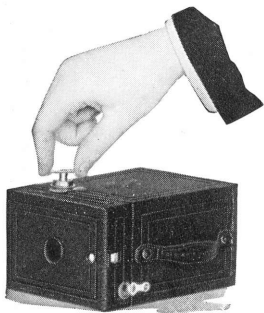
Thread the paper through the *longer* opening of the slit in the reel *as far as it will go*. Give the spool two or three forward turns to make the paper hold securely on the spool.



Be sure that the paper is started straight. Do not unroll too much protective paper or the film will be fogged and ruined.

Insert the roll holder in the outside box, so that the slotted end of the spool comes next to the winding key in the outside box.

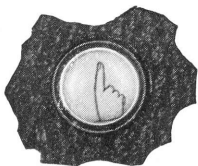
Fasten the roll holder to the outside box with the two catches AA, see illustration on page 2.



Press in and at the same time turn the winding key until the web at the lower end of the key fits into the slot in the spool end.

Turn the key and watch the red window.

After a few turns, a warning hand will appear; then turn slowly until the figure 1 is in the center of the window.



Press in the winding key slightly, when turning it.

The film is now in position for the first picture. After each exposure be sure to wind the film, bringing the next number into position. This prevents making two pictures on the same section of film.

## MAKING THE EXPOSURES

### “Snapshots”

**T**HE Rainbow Hawk-Eye No. 2, Model C, is a fixed-focus camera, therefore, subjects that are about eight feet and farther from the camera will be sharp, and even those as near as six feet, while not as sharp, will be sharp enough for all ordinary purposes. Do not have the subjects closer to the camera than about six feet, without using a Kodak Portrait Attachment, see page 12.

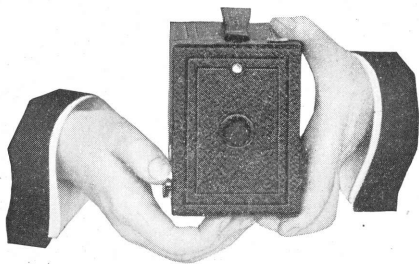


The shutter of the camera is released by pushing the exposure lever B (see illustration above) from one end of slot to the other with the thumb. Push the lever *slowly*, in *one direction*.

*only, and as far as it will go.* If no "click" is heard no exposure is made.

Do not jerk the lever as any movement of the camera, at the instant of exposure, will blur the picture.

When making snapshots, the subject should be in the broad, open sunlight, but the camera must not. The sun should be behind your back or over the shoulder. If it shines directly into the lens it will blur and fog the picture.



Point the camera at the subject to be photographed and looking into the finder from directly over the center of it, include what you want and compose the picture by turning to the right or left, see page 10.

Only what is seen in the finder will show in the picture.



When making snapshots, hold the camera firmly against the body. When pushing the exposure lever, hold the breath for the instant. If the camera is moved during the exposure, the picture will be blurred.

## MAKING THE EXPOSURE

Hold the camera steady and level, as shown in the illustration on page 10, and push the exposure lever *once*, as far as it will go. *This makes the exposure.*

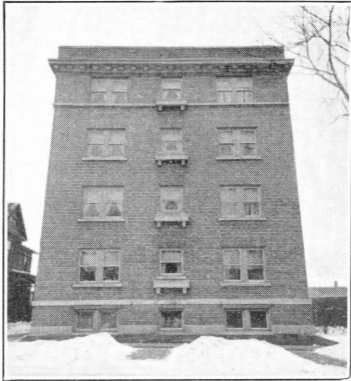
**Important:** The exposure lever must be pushed *slowly* to avoid jarring the camera. If the camera is not held steadily the picture will be blurred.

All exposures must be made outdoors with the subjects in bright sunlight, and during the hours from two and a half hours after sunrise until two and a half hours before sunset.

### HOLD CAMERA LEVEL

The camera must be held level. If all of the subject cannot be included in the finder without tilting the camera upwards, move backwards until it is all included *with the camera held level*. See illustration on page 12.

If the subject is below the normal height, like a small child or a dog, the camera should be held down level with the center of the subject.



*Effect produced by tilting the camera.*

## **KODAK PORTRAIT ATTACHMENT**

The Kodak Portrait Attachment makes head and shoulder portraits. It can also be used for photographing flowers and similar subjects.

Place the Attachment in the lens opening and compose the picture in the finder. *The subject must be exactly  $3\frac{1}{2}$  feet from the lens; measure the distance carefully from the lens to the face.*

Use *Kodak Portrait Attachment No. 1* with the *Rainbow Hawk-Eye No. 2, Model C.*

## KODAK DIFFUSION PORTRAIT ATTACHMENT

The Kodak Diffusion Portrait Attachment is a supplementary lens used in the same manner as the regular Kodak Portrait Attachment. By using this Attachment, portraits are made more artistic, due to the softening effect of diffusion.

Use *Kodak Diffusion Portrait Attachment No. 1* with the Rainbow Hawk-Eye No. 2, Model C.

### TURN A NEW SECTION OF FILM INTO POSITION



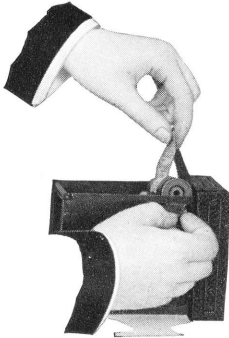
Press in the winding key slightly and turn it slowly until No. 2, or the next number, is in the center of the red window.

The warning hand appears only before section No. 1.

Turn the next section of film into position immediately after making each exposure; this prevents making two pictures on the same section of film.

## REMOVING THE FILM

After all the exposures have been made, turn the winding key until the end of the protective paper passes the window. The film is now ready for removal from the camera.



In a subdued light, open the camera and remove the roll holder as shown on pages 3 and 4. Hold the ends of the protective paper and the sticker together to prevent paper from loosening. If the sticker has been wound under the roll, revolve the spool to bring it up. Draw out the spring grip just enough to release the spool and lift out the roll of exposed film, as shown in the illustration above.

Fold under about half-an-inch of the protective paper, and fasten it with the sticker.

**“Cinch” Marks:** After removing the film from the camera, do not wind it tightly with a twisting motion, or the film might be scratched.

Wrap up the exposed film. It is now ready for development. This may be done by a photo finisher, or by yourself. If the latter is desired, you may write to our Service Department, mentioning the size of the pictures made with your camera, and we will send you a list of the necessary materials which can be purchased from a Kodak dealer.

**Important:** Film should be developed as soon as possible after exposure. The quality of the image on all sensitized products is retained by prompt development after exposure.

Remove the empty spool and place it in the recess on the winding side of the roll holder. The slotted end of the spool must show through the round opening in the roll holder.

It is a good plan to reload the camera as soon as an exposed film has

been removed, to be ready for the next pictures. Load the camera with Kodak Film.

## CARE OF THE CAMERA

**Caution:** Prolonged exposure to direct sunlight might cause the colored covering of the camera to fade. Do not use alcoholic solvents for cleaning this camera.

### Keep Dust Out of the Camera

Wipe the inside of the camera and roll holder occasionally, with a slightly damp cloth, especially if the camera has not been used for some time.

EASTMAN KODAK COMPANY,  
ROCHESTER, N. Y.

## PRICE LIST

KODAK FILM, 120, for the Rainbow Hawk-Eye No. 2, Model C, 2¼ x 3¼, six exposures . . . . .	\$ .25
KODAK PORTRAIT ATTACHMENT No. 1 . . . . .	.50
KODAK DIFFUSION PORTRAIT ATTACHMENT No. 1 . . . . .	1.25
KODAK SKY FILTER No. 1 . . . . .	.75
KODAK NEGATIVE ALBUM, to hold 100 2¼ x 3¼ or smaller negatives . . . . .	1.25
KODAK TRIMMING BOARD, No. 1, 5-inch . . . . .	.75
KODAK DRY MOUNTING TISSUE, 2¼ x 3¼, three dozen sheets . . . . .	.10
RHODES ALBUM, loose-leaf, cloth cover, 50 black leaves, size 5 x 8 . . . . .	.90
Size 7 x 11 . . . . .	1.25
VELOX TRANSPARENT WATER COLOR STAMPS, booklet of twelve colors . . . . .	.50
VELOX WATER COLOR OUTFIT, consisting of Artist's Mixing Palette, three Camel's Hair Brushes and one book of Velox Transparent Water Color Stamps (twelve colors) . . . . .	1.00
"HOW TO MAKE GOOD PICTURES," an illustrated book of helpful suggestions. It describes various methods of making exposures, developing, printing, enlarging, coloring, making lantern slides and other interesting subjects . . . . .	.50

*All prices subject to change without notice.*

**EASTMAN KODAK COMPANY,  
ROCHESTER, NEW YORK.**



# *Velox*

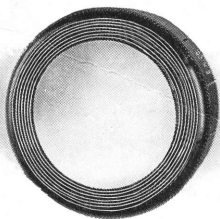
*now identifiable*

**T**O protect Kodak amateurs, and to protect Developing and Printing houses that endeavor to give their customers the best possible results, we have made Velox paper identifiable. The trade name "Velox" is printed, faintly, on the back of every sheet. Look for it.

Insist on Velox—the paper that exactly meets the requirements of amateur negatives—and know you're getting the best results possible from your films.

*The Velox Book tells the working of a simple paper in simple terms—a valuable photographic help. Free from us or your dealer.*

**EASTMAN KODAK COMPANY**  
**ROCHESTER, N. Y.**



# The Kodak Portrait Attachment

Fits your Hawk-Eye for head and shoulder portraits—it brings the image into sharp focus at short range.

EASTMAN KODAK COMPANY  
*At your dealer's* ROCHESTER, N. Y.

## IMPORTANT

All exposures must be made outdoors, with the subjects in bright sunlight, and during the hours from 2½ hours after sunrise until 2½ hours before sunset.

The sun must be behind your back or over the shoulder. If the sun shines directly into the lens it will blur and fog the picture.

Hold the camera *level*.

Hold the camera *steady* when making the exposure. The camera should be held firmly against the body and when pushing the exposure lever, hold the breath for the instant. If the camera is moved during the exposure, the picture will be blurred.

Turn a new section of film into position immediately after making an exposure. This will prevent making two pictures on the same section of film.

While loading and unloading the camera, be very careful to keep the protective paper wound tightly around the film to prevent light striking it.

EASTMAN KODAK COMPANY,  
ROCHESTER, N. Y.