



This manual is for reference and historical purposes, all rights reserved.

This page is copyright© by M. Butkus, NJ.

This page may not be sold or distributed without the expressed permission of the producer

I have no connection with any camera company

On-line camera manual library

This is the full text and images from the manual. This may take 3 full minutes for the PDF file to download.

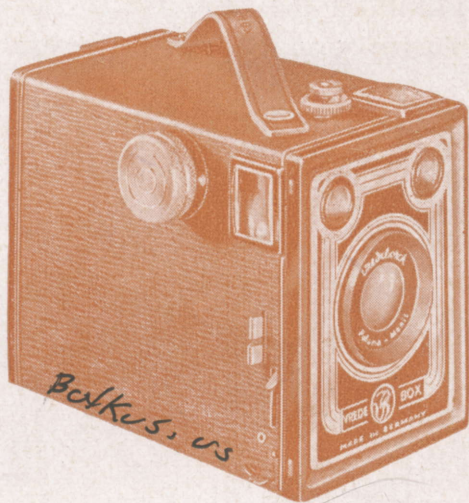
If you find this manual useful, how about a donation of \$3 to: M. Butkus, 29 Lake Ave., High Bridge, NJ 08829-1701 and send your e-mail address so I can thank you. Most other places would charge you \$7.50 for a electronic copy or \$18.00 for a hard to read Xerox copy.

This will allow me to continue to buy new manuals and pay their shipping costs.

It'll make you feel better, won't it?

**If you use Pay Pal or wish to use your credit card,
click on the secure site on my main page.**

PayPal Name Lynn@butkus.org

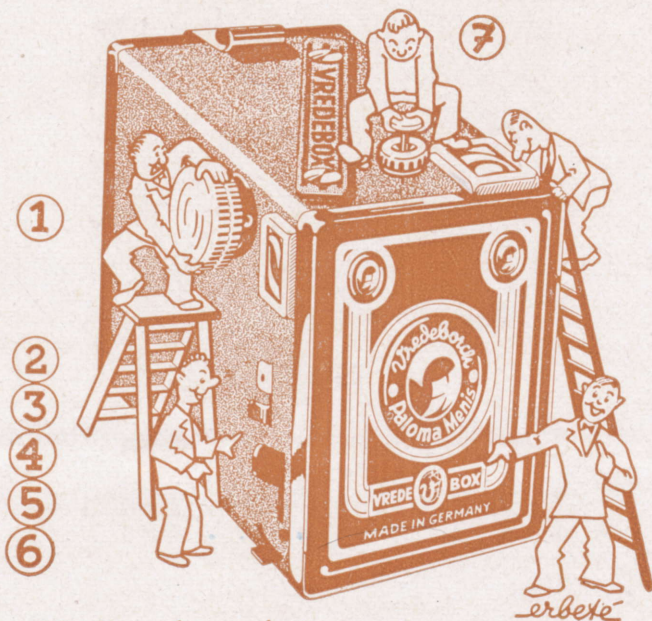


VREDE BOX

Model „Paloma“

with **built-in regulable selfrelease**

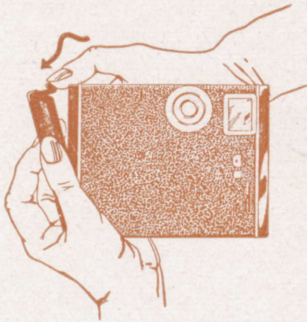
Before installing the first film in the camera, familiarize yourself with its operation.



- (1) Revolving button
- (2) Diaphragm=slider
 normal position large diaphragm
 extracted small diaphragm
- (3) Time=slider
 normal position snap=shot
 extracted time=position
- (4) Release=lever
- (5) Socket for wire release
- (6) Stop=lever for extended time exposure
- (7) Button of self release with milled screw

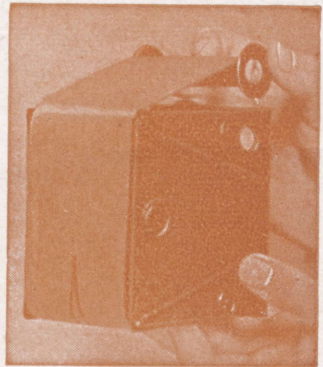
Taking pictures with the Vrede-Box is most simple, nevertheless it is advisable to study following instructions if you will enjoy your first photo already.

Loading Camera



Hold the box with your right hand in such a way that thumb is pressing against the clasp. So you are able to lift the cover with your left hand easily. Now, you extract the revolving button (1) to the stop and take out the film-carrier. Slide the pointed end of the new film-roll into the broad groove of the empty spool. Pay attention that the

groove of the spool is at your right hand side. After two turns you put the spool into the carrier; take care that the groove of the spool becomes visible in the side-hole of the carrier. The photo shows how to proceed further in inserting the film-roll simply. You now put the carrier into the case in such a way that the revolving button hits the side-hole. By turning the button to the right and slightly pressing against it you make the revolving system ready to work. Make sure that the film-roll can be turned and then shut the box. Do not expose film to bright light when installing in camera.



Snap Shot (M)

When carefully turning the revolving button (1) a number 1 will show up in the red hole after several attention marks. The camera is now ready to take pictures. The bright view in the brilliant-finders shows the desired sector of the picture.

Then press down the release-lever slightly and the film has been exposed. The release-lever automatically slides back into its old position. You will avoid much trouble if turning the film to next number immediately after a photo has been taken.

When taking pictures on a highly sensible film in glaring light (beach, snow) it is recommended to apply the small diaphragm by extractind the upper slider (2) marked by a small hole. This, at the same time, increases the depth of focus.

Time-Exposure (B)

In order to avoid blurred pictures the box must be given an absolutely steady stand (table, bench, tree). Pull out the time-slider (3) to full extend and the diaphragm is opened, as long as release-lever is pressed down.

Extended Time-Exposure (T)

To make extended time-exposures, pull out time-slider (3) to full extend, press down release-lever (4) with thumb and after this press backwards stop-lever (5) with fore-finger.

The shutter will remain opened in this position. To close shutter, push stop-lever forwards again and the release-lever will go back at the same time.

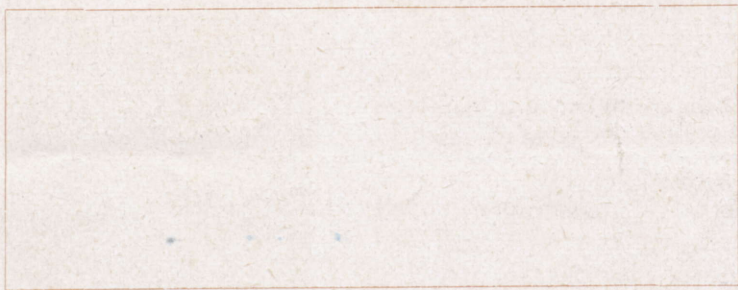
To take Film out

After the last photo has ben taken you turn the button to the right until film is rolled up completely. Then open camera as described and re-install the empty spool at the top (the groove to be visible in the side-hole!) and load camera again.

Ask for film-spool of normal size (B2 or 120) in your photo-shop.

And now, we wish you much pleasure with
good pictures.

*A good photo is valuable
and lasting souvenir*



VREDEBORCH
Printed in Germany