



This manual is for reference and historical purposes, all rights reserved.

This creation is copyright© by M. Butkus, NJ, U.S.A.

These creations may not be sold or distributed without the expressed permission of the producer

I have no connection with any camera company

On-line camera manual library

If you find this manual useful, how about a donation of \$2 to:

M. Butkus, 29 Lake Ave., High Bridge, NJ 08829-1701

and send your e-mail address so I can thank you.

Most other places would charge you \$7.50 for a electronic copy or

\$18.00 for a hard to read Xerox copy.

This will allow me to continue this site, buy new manuals and pay their shipping costs.

It'll make you feel better, won't it?

If you use Pay Pal, go to my web site

www.orphancameras.com and choose the secure PayPal donation icon.

"LARGER" CONTACT PRINTS



Most photo finishers throughout the country are equipped with contact enlargement printers that produce approximately 3 x 4 prints from the negatives you get with this Falcon Miniature.

Retail prices for these enlarged prints vary in different sections of the United States. However, in most cases they cost only slightly more than ordinary quality prints. See your dealer for further information.

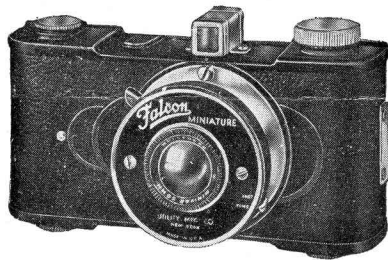


UTILITY MANUFACTURING CO.
Incorporated
261 FIFTH AVENUE, NEW YORK, N. Y.

INSTRUCTIONS

FOR PICTURE TAKING WITH

Falcon MINIATURE



Use any vest pocket size film —
1 $\frac{1}{8}$ x 2 $\frac{1}{2}$ in. (4 x 6 $\frac{1}{2}$ cm.)

**READ CAREFULLY
FOR BEST RESULTS**

G U A R A N T E E

This Falcon Miniature

is unconditionally guaranteed against defective workmanship and material for a period of one year.

FOR SERVICE return camera to factory with this guarantee attached and twenty-five cents in stamps to cover handling and postage.



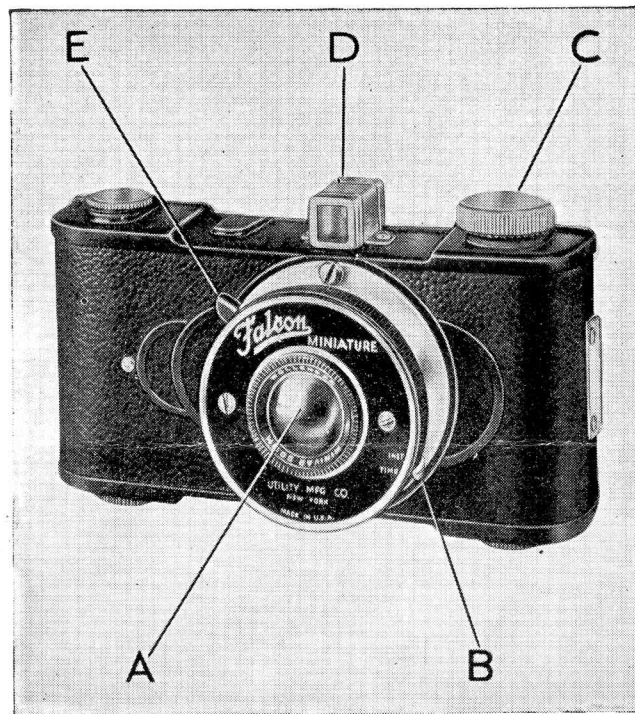
We want you to get the fullest satisfaction from your Falcon camera. You will if you follow the simple instructions which are contained in this booklet. Please read them thoroughly before commencing to use the camera.

Clean Lens Important

It is very important that you clean the lense with a soft cloth or handkerchief, before using camera, to insure securing bright pictures.

UTILITY MANUFACTURING CO.
Incorporated
261 FIFTH AVENUE, NEW YORK, N. Y.

The Falcon Miniature



A-LENS

B-TIME EXPOSURE LEVER

C-WINDING KEY

D-VIEW FINDER

E-EXPOSURE LEVER

To Load and Unload Camera

Always load and unload camera in a subdued light, never near a bright sunlight. Hold back of camera toward you and push lock slide in direction of arrow and remove back. See that the empty spool is in the Top receptacle (along side of the winding key) with the notched end in contact with the winding key.

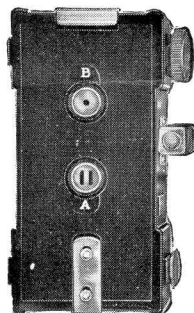
Place the film in the lower receptacle. Now break the seal in which the roll is held in place. Pull the end of the red paper toward the empty spool. Thread the end of the red paper through the broadest side of the slit of the spool. Now turn the winding key two or three times toward the right so that the paper will begin to roll onto the empty spool.

Replace the back, by holding the back of the camera toward you, and placing the cut out near the window B under the metal receptacle and pressing back gently downwards.

The film is now properly placed in the camera and shut. Follow directions for winding very carefully.

To Wind Film

Turn the winding key slowly, while watching the lower red window on back of camera. When the figure "1" appears in the center of the lower red window marked (A) the camera is ready for use. See illustration below.



Top Window B

Lower Window A

As soon as you have taken the picture be sure to wind number 1 from (A) window to (B) window. You are now ready to snap your second picture. Repeat process after every picture.

When number 8 appears in center of (B) window you will have taken 16 pictures.

When you have taken all the pictures keep turning the key until the complete roll of film (including the red paper which protects it) is all wound on the top roll.

Open back of camera as when loading, remove roll of film; now seal roll with piece of gummed paper which you will find on the end of the roll, so that it cannot run loose.



To Take Pictures

Hold the camera with the sight as close to the eye as possible, keeping the camera firmly against the face. Make sure the object or subject you are taking is framed within the finder.

The camera **MUST** be held level. Should the subject be below your eye level, like a small animal, the camera should be held down level with the center of the subject.

Time Exposures

To take time exposure pictures press lever from 25 to bulb. This lever is on the right side of name plate, when the camera is facing you.

In taking time exposures place the camera on a firm object such as a table or chair. Never hold camera in your hand. After sighting your object press shutter release, keeping your finger on it, counting the number of seconds of exposure desired. When the required number of seconds has expired — and not until then — remove your finger from the shutter release. If no more time exposures are desired, adjust for instantaneous pictures, by pushing lever back to 25.

Suitable Light Condition

In taking instantaneous pictures, be sure that the sun is directly behind your back. If sun shines directly into the lens, pictures will be fogged.