

This manual is for reference and historical purposes, all rights reserved.

This creation is copyright© by M. Butkus, NJ, U.S.A.

These creations may not be sold or distributed without the expressed permission of the producer

I have no connection with any camera company

On-line camera manual library

If you find this manual useful, how about a donation of \$2 to:

M. Butkus, 29 Lake Ave., High Bridge, NJ 08829-1701

and send your e-mail address so I can thank you.

Most other places would charge you \$7.50 for a electronic copy or

\$18.00 for a hard to read Xerox copy.

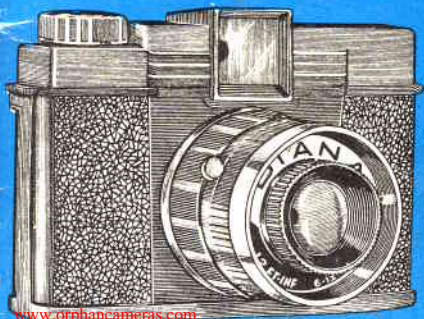
This will allow me to continue this site, buy new manuals and pay their shipping costs.

It'll make you feel better, won't it?

If you use Pay Pal, go to my web site

www.orphancameras.com and choose the secure PayPal donation icon.

www.orphancameras.com



www.orphancameras.com

DIANA CAMERA

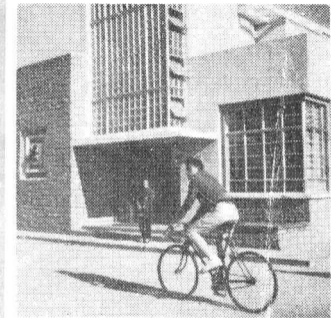
INSTRUCTION FOR USE

TAKES 16 COLOUR OR BLACK/WHITE PICTURES WITH 120 FILM

www.orphancameras.com

You can take 16 Colour or Black/White pictures, size $4\frac{1}{2} \times 4\frac{1}{2}$ cm. on one roll of No. 120 film. The picture on the right shows you the actual size and it can be enlarged if you so wish.

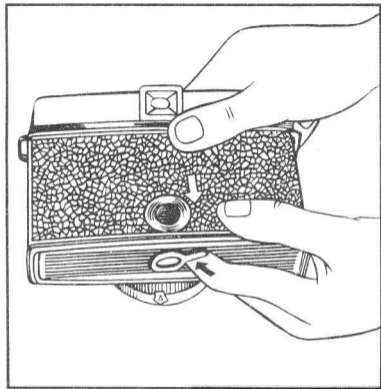
It is advisable to take colour pictures in sunny days.

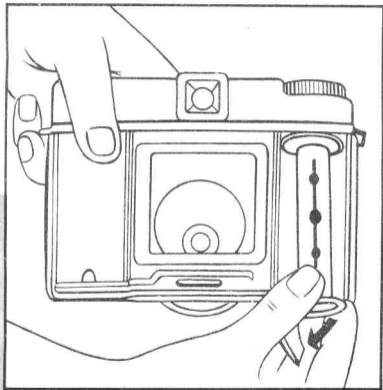


HOW TO LOAD FILM:

IT IS IMPORTANT WHEN LOADING OR UNLOADING FILM TO KEEP CAMERA AWAY FROM DIRECT LIGHT.

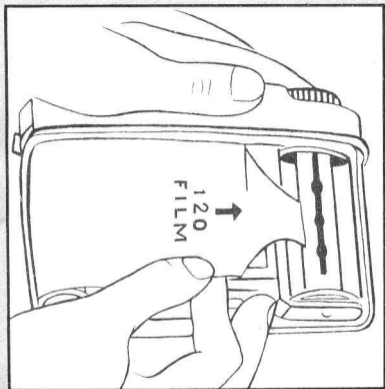
To open the camera turn the catch at the bottom to the word "OPEN", then pull the back cover downwards.

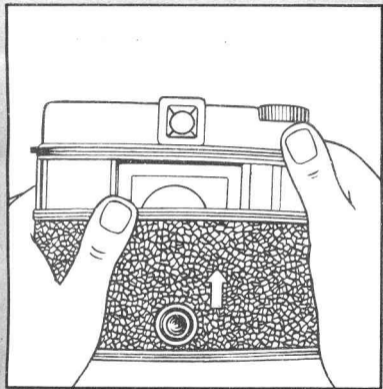




Put the empty spool in the upper spool chamber and swing out the lower spool holder. Put the film in the lower spool chamber with the tapered end of the backing paper towards the empty spool, then swing the spool holder back into the spool chamber.

Remove the adhesive strip of the roll film and pull out the backing paper. Insert the tapered end into the slot in the empty spool and turn the winding knob slowly to ensure that that film runs properly.





To close the camera put the back cover in position and turn the catch at the bottom to the word "LOCK"

Turn the winding knob in the direction of the arrow until the number "1" appears in the red window.

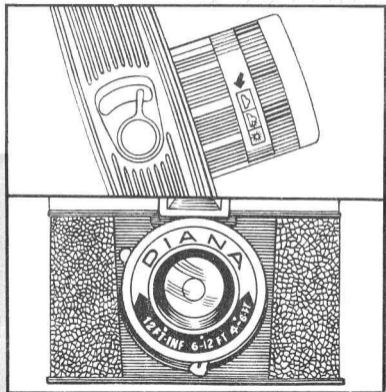
NOW THE CAMERA IS READY
FOR TAKING PICTURES!

HOW TO TAKE PICTURES:

DON'T FORGET TO TAKE OFF THE LENS CAP!

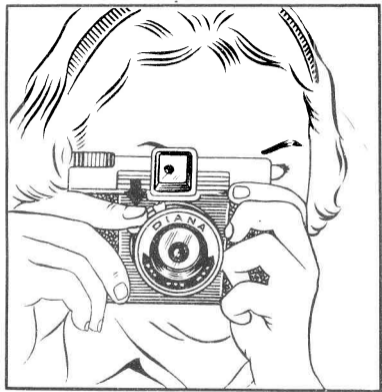
First of all determine if the weather is Bright, Cloudy or Dull and set the aperture setting.

Look through the view finder and aim at the object. Ascertain the distance from the object to the camera and set the distance setting.



Look through the view finder again and compose the picture. Then press the shutter release slowly downwards. The picture is taken.

Turn the winding knob until the next number is seen in the red window. Repeat the above procedure until 16 pictures have been taken.



HOW TO UNLOAD FILM

Turn the winding knob until the film is completely wound into the taking spool.

Open the camera as indicated above and take out the exposed film for developing.

HOW TO USE "BULB" SHUTTER.

The "Bulb" shutter is only used when taking pictures indoor where the light is insufficient. On pressing down the shutter lever the lens remains open until released. In view of this it is important that the camera must be put on a firm place and kept steady.

