

EASTMAN KODAK MINIATURE CAMERAS . . proved quality

KODAK PONY . . two models
 135 takes 20-36 shots on 35mm film
 828 takes 8 shots on 828 film

- Our lowest priced miniatures . . fine pictures
- Red markings simplify exposure settings

Beginners with no knowledge of exposure settings can start using camera because average settings for lens and shutter speed are marked in red. Lenses are coated to reduce light glare and give sharp color or black and white pictures.

Lens—Anaston f:4.5 coated 51mm. Focuses 2 1/2 ft. to infinity. **Shutter**—Pre-cocking with 1/25 to 1/200 sec. and bulb. Stops down to f:22. Synchronized for flash pictures. Film type indicator.

Optical eye-level viewfinder. Molded plastic body 5 1/8 x 3 1/8 x 2 1/4 in. Lens mount diameter (28.5 mm.)

- 3 C 06203MT—**Pony 828**. Takes 8 pictures 1 1/4 x 1 1/2 in., on 828 roll film. *Postpaid*. (Wt. 2 lbs.) . . . \$31.15
- 3 C 06201MT—**Pony 135**. Pictures 1 x 1 1/2 in., on 20 or 36 exposure 35mm film. *Ppd.* (Wt. 2 lbs.) . . . \$35.75
- 3 C 6382M—**Flash Unit** with batteries. Order No. 5 or 25 flashbulbs. (Not Ppd.) Shpg. wt. 2 lbs. \$12.50†
- 3 C 6244M—**Leather Eveready Case** for both models above. (Not postpaid.) Shpg. wt. 1 lb. . . . \$4.95†

\$31.15

Cash or terms
\$3.50 Down
828 Camera

KODAK SIGNET 35
 Eastman's newest 35mm camera
 . . with famous Ektar f:3.5 lens

- Single window for rapid focusing and aiming
- Settings visible from above for fast operation

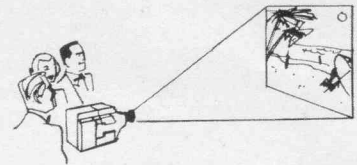
Combines all the wanted features of miniature cameras in compact, light-weight metal body. Made to take fine pictures quickly . . you sight and focus through same window. "Ektar" is the Kodak name for their finest quality lenses . . give brilliant pictures and color slides.

Lens—Ektar f:3.5 coated 44mm. Stops down to f:22. focuses 2 ft. to infinity. **Shutter**—pre-cocking with speeds 1/25 to 1/300 sec. and bulb setting for taking time exposures. Flash synchronized.

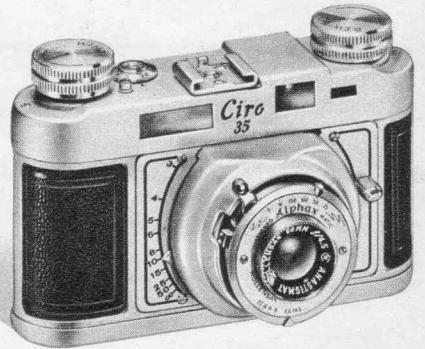
Double exposure prevention. Exposure guide on back of camera helps determine proper lens and shutter settings. Indicator can be set to show type of film being used. Shutter release has light-touch action to keep camera steady. Uses 35mm film. Lens mount diameter 28 mm. Body 4 1/2 x 3 1/8 x 2 1/2 in. Order flash unit at lower left and No. 5 flashbulbs. 3 C M6102MT—*Express prepaid*. (Wt. 4 lbs.) \$92.50

\$92.50

Cash or terms
\$9.50 Down



**CIRO 35 . . to our knowledge
 the lowest priced 35mm
 camera with rangefinder**



Now manufactured by famous Graflex Company, makers of professional cameras for newsmen and studios. Ciro 35 takes clear color slides and black and white pictures. Rangefinder is coupled to lens . . when you see two split images come together in rangefinder window, lens is sharply focused.

Lens—Wollensak f:4.5 coated 50mm. Focuses 3 ft. to infinity. **Shutter**—speeds 1/25 to 1/150 sec., bulb and time settings. Synchronized for flash.

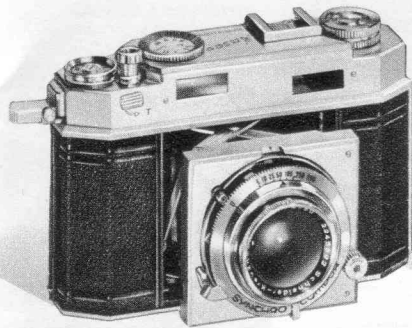
Eye-level optical viewfinder for fast aiming. Metal body 5 x 3 1/4 x 2 1/4 in. Lens mount diameter 24mm. Uses 20 or 36 exposure 35mm film.

- 3 C M6225MT—*Postpaid*. (Shpg. wt. 4 lbs.) . . . \$44.15
- 3 C M6206MT—Same as above but with f:3.5 lens—speeds 1/10 to 1/200 sec. *Express prepaid*. (Shpg. wt. 4 lbs.) *Same price cash or terms. \$5 Down* . . . \$49.05
- 3 C 6219MT—**Flash Unit** with batteries. Order No. 5 or 25 flashbulbs (page 30). *Postpaid*. (Wt. 1 lb.) . . . \$6.30
- 3 C 6223M—**Leather Eveready Case**. *Ppd.* (Wt. 12 oz.) 6.50

\$44.15

Cash or terms
\$4.50 Down

**IMPORTED FROM GERMANY . .
 World-famous cameras with fine lenses**



ANSCO KAROMAT 35mm Camera
 Takes pictures in rapid order

Transport lever advances film and sets the shutter with a flick of the finger . . you're ready to shoot again, to catch the action as it happens. Rangefinder window combined with viewfinder window . . lets you focus and aim at one time without moving eye. Made in Germany.

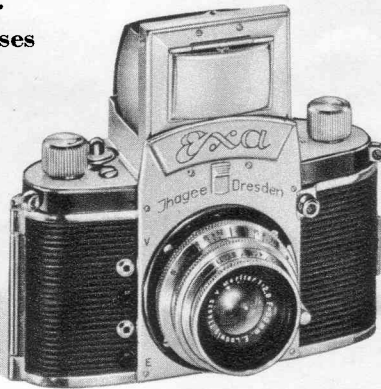
Lens—Schneider Xenon f:2 coated 50mm. Focuses 3 ft. to infinity. **Shutter**—Compur with nine speeds from 1 to 1/500 sec., time and bulb. Flash synchronized. Double exposure prevention. Depth of field guide. Shutter release on camera body for steady shots. Leather covered body 5 x 3 1/4 x 2 1/4 in. Lens mount diameter 33mm. Uses 35mm film. Order eveready case and flash unit below. Uses No. 5 bulbs. 3 C M6187MTY—*Express prepaid*. (Shpg. wt. 3 lbs.) \$164.10

\$164.10

Cash or terms
\$16.60 Down

3 C 6301MY—*Case*. Not ppd. Shpg. wt. 1 lb. . . . 12.50†

† Means shipped from Chicago, Philadelphia or Los Angeles.



EXA 35mm Camera
 Single lens reflex model

Focus and frame on picture-size screen through the camera lens. You see the true picture you will get. No cut off heads or out of focus pictures. Swing-away magnifier for critical focusing on groundglass. Hood converts to eye-level sport viewfinder.

Lens—Ludwig Meritar f:2.9 coated 50mm. Focuses 2 1/2 ft. to infinity. **Shutter**—focal plane, speeds 1/25 to 1/150 sec., bulb. Flash synchronized. Made in Germany. Double exposure prevention. Uses 35mm film. Metal body 3 1/4 x 5 x 3 in. Lens mount diameter 37mm. Uses flash at left with No. 6 bulbs. Shpg. wt. 3 lbs. 3 C M6141TF—*Express prepaid*. . . . \$89.75

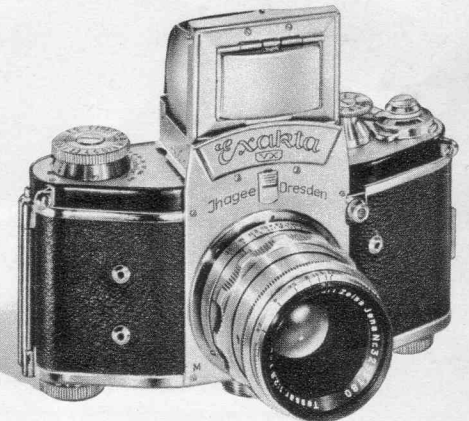
\$89.75

Cash or terms
\$9.00 Down

3 C M6136TF—Above but with Zeiss Tessar f:3.5 lens. *Express prepaid*. . . . \$119.75

3 C 6300TF—*Leather Eveready Case*. *Postpaid*. (Shpg. wt. 1 lb.) . . . \$9.95

Above shipped from New York, N.Y. factory.



NEW! KINE EXAKTA VX
 Extremely versatile 35mm camera

Single lens reflex system shows subject on viewing screen in size, position and sharpness just as it will be on finished print. Perfect for close-up pictures. Focus with lens wide open . . then close lens to pre-selected aperture to take the picture without removing eye from reflex viewer.

Lens—Zeiss Tessar f:2.8 coated 50mm. Focuses 1 1/4 ft. to infinity. **Shutter**—29 speeds; 12 sec. to 1/1000 sec., time and bulb. Focal plane shutter cocks when you advance film, prevents double exposures.

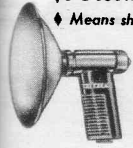
Delayed shutter release. Film transport lever for rapid shooting. Flash synchronized. Order flash at left and No. 6 bulbs. Lens mount diameter 31.5mm.

- 3 C M6144TF—*Express prepaid*. (Wt. 3 lbs.) . . . \$269.50
- 3 C M6145TF—With Zeiss Biotar f:2 lens. Lens mt. diam. 42 mm. *Express prepaid*. (Wt. 3 lbs.) \$34.50 Down. \$343.00
- 3 C 6317TF—*Leather Eveready Case*. *Postpaid*. (Shipping weight 1 pound) . . . \$12.00

\$269.50

Cash or terms
\$27.00 Down

Exaktas and case shipped from New York, N.Y. factory.



BUSCH B-C Flash Unit. Battery capacitor gives mighty power surge for sure firing. Battery, included, lasts 1 year. Can fire several bulbs in extension. *Postpaid*. 3 C 9626M—(Shpg. wt. 2 lbs.) . . . \$19.00